

SCARIBAR

Medium Centre Single Folding Wing

Illustrated Parts and Tine Layout Manual

This manual has been designed to assist in the correct assembly and servicing of the **MEDIUM CENTRE SINGLE FOLDING WING SCARIBAR**. The illustrated parts views have been exploded in the way that the product is assembled, and can be used as a guide for methods of assembly and dis-assembly.

When ordering parts the following details are required:-

- 1) Part Number and description.
- 2) Model Number
- 3) Machine Serial Number (For quick reference, write the model number and machine serial number below).

MODEL N^o. _____

MACHINE SERIAL N^o. _____

Trained Staff are always available to assist you to obtain the very best results from your machine.

For assistance, please contact your Horwood Bagshaw dealer.

Contents

Introduction		Page 4
Specifications		Page 5
Illustrated Parts Manual		
Centre Frame and 2.6 m Wings	- 30' and 35'	Page 6
Centre Frame and 3.1 m Wings	- 30' and 39' 3m Controlled Traffic and 34', 36' and 39' Conventional	Page 8 Page 8
Centre Frame and 3.8 m Wings	- 38' and 41'	Page 10
A-Frame Assembly		Page 12
Wheel Arm Assemblies		Page 14
Tine Assemblies		Page 16
Hydraulic Tine Components		Page 18
A-Frame Hydraulics		Page 20
Phasing Hydraulics		Page 22
Wing Lift Hydraulics for 2.6 m and 3.1 m Wings	- 30', 34', 35', 36' and 39'	Page 24
Wing Lift Hydraulics for 3.8 m Wings	- 38' and 41'	Page 26

Contents

Tine Pattern Layouts

Medium Centre Scaribars

30' with 51 Tines and 35' with 59 Tines	7" (180 mm) Spacing	Page 28
30' with 41 Tines and 35' with 47 Tines	8 ³ / ₄ " (225 mm) Spacing	Page 29
30' with 34 Tines and 35' with 38 Tines	10 ¹ / ₂ " (270 mm) Spacing	Page 30
30' with 47 Tines for 3 beds controlled traffic	7" (180 mm) Spacing	Page 31
34' with 57 Tines for conventional tillage		
36' with 61 Tines for conventional tillage		
39' with 63 Tines for 4 beds controlled traffic		
39' with 67 Tines for conventional tillage		
30' with 37 Tines for 3 beds controlled traffic	8 ³ / ₄ " (225 mm) Spacing	Page 32
34' with 45 Tines for conventional tillage		
36' with 49 Tines for conventional tillage		
39' with 49 Tines for 4 beds controlled traffic		
39' with 53 Tines for conventional tillage		
30' with 30 Tines for 3 beds controlled traffic	10 ¹ / ₂ " (270 mm) Spacing	Page 33
34' with 38 Tines for conventional tillage		
36' with 40 Tines for conventional tillage		
39' with 40 Tines for 4 beds controlled traffic		
39' with 44 Tines for conventional tillage		
38' with 65 Tines and 41' with 69 Tines	7" (180 mm) Spacing	Page 34
38' with 51 Tines and 41' with 55 Tines	8 ³ / ₄ " (225 mm) Spacing	Page 35
38' with 42 Tines and 41' with 46 Tines	10 ¹ / ₂ " (270 mm) Spacing	Page 36

Part Number Index To Page Number

Page 37

Introduction

This illustrated Parts Manual has been compiled to assist the owner in obtaining maximum performance and reliability from the Horwood Bagshaw Scaribar. This manual should be read in conjunction with the Scaribar Operator's Manual which details the assembly, setting up, operating and maintenance instructions.

The Scaribar has been specifically designed as a heavy duty scarifier, with market leading under frame clearance, making it ideally suited as a seeding bar for either conventional or direct drilling operations. All major frame and wing assemblies are constructed from heavy duty square and rectangular steel tubing, with generous wheel equipment suitably matched for transport loads, as well as un-paralleled field flotation.

Tine jump springs can be adjusted to give tine break out pressures of

Light spring	70 lb (30 kg)	105 lb (50 kg)	145 lb (65 kg)
Standard spring	165 lb (75 kg)	260 lb (115 kg)	350 lb (160 kg)
Dual heavy duty springs	235 lb (105 kg)	365 lb (165 kg)	485 lb (215 kg)

Hydraulic tines can be adjusted to give tine break outs ranging from 70 lb (30 kg) @ 260 psi charge to 660 lb (300 kg) @ 2,300 psi charge

Tines can be arranged on Scaribars to give 7" (180 mm), 8.75" (225 mm), and 10.5" (270 mm) pitch spacings.

Please pass on this manual with the Scaribar at the time of resale for usage by the new owner.

Notes for using this manual

Left and Right Hand identification of the Scaribar is determined by facing the direction of forward travel when viewed from behind the machine.

Width of Scaribars referred to in this document is the width of cut for a 180 mm pitch Scaribar with 180 mm wide shares fitted.

i.e. Quoted Scaribar width (m) = number of tines x 0.180

Tine layout drawings show the tine's location measured to the centre of the tine and relative to:-

- the machine's centre-line for the centre frame,
- the outside of the wing/extension side plate for the wings and extensions.

Specifications

Underframe clearance		28"	(710 mm)
Road transport clearance (max)		11 1/4"	(285 mm)
Working depth		5.9"	(150 mm)
Row spacings	- front and rear rows	2' 6"	(750 mm)
	- centre rows	2' 11"	(900 mm)
Overall length		27' 6"	(8.4 m)
A-frame length		16'	(4.9 m)
Main frame depth		11' 6"	(3.5 m)

Width designation	2.6 m wing		3.1 m wing				3.8 m wing	
	30' Conv	35' Conv	30' CT	34' Conv	36' Conv	40' CT & Conv	38' Conv	41' Conv
Transport height	13' 0" (3.9 m)	15' 4" (4.7 m)	14' 8" (4.5 m)	14' 8" (4.5 m)	16' (4.9 m)	17' 8" (5.4 m)	17' (5.2 m)	18' 3" (5.6 m)
Transport width	18' 11" (5.8 m)	18' 11" (5.8 m)	18' 11" (5.8 m)	18' 11" (5.8 m)	18' 11" (5.8 m)	18' 11" (5.8 m)	18' 11" (5.8 m)	18' 11" (5.8 m)
Mass with 180 mm pitch tines (kg) (subtract 36.2 kg per tine for other tine spacings)	5,800	6,400	6,000	6,300	6,500	6,700	6,800	7,100

Tyres 15.5/80 x 24 Gripster

Tine jump height 20" (500 mm)

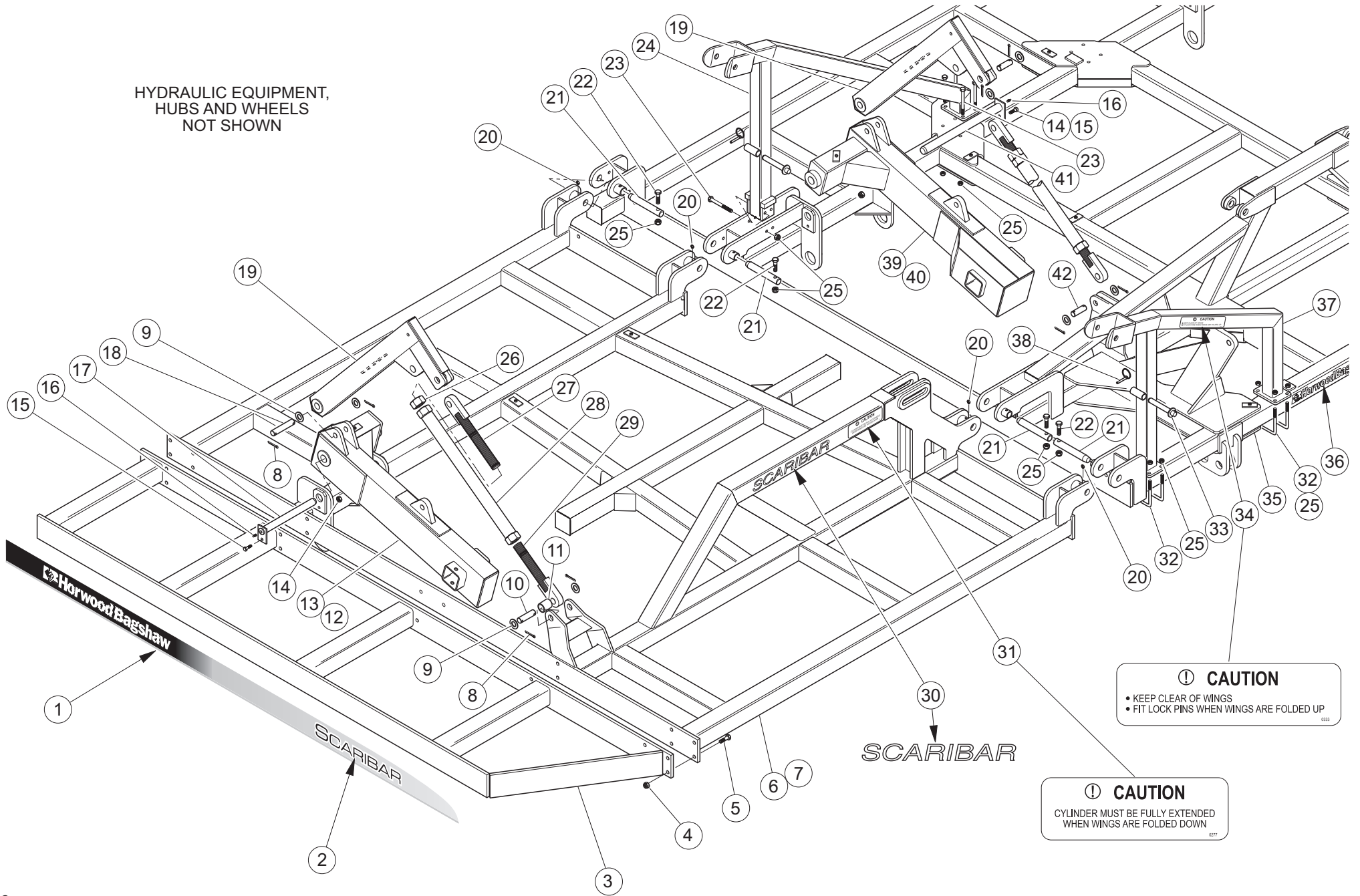
Tine Options, Edge-on C Shank with double bolt, 44.5 mm wide foot to suit 47° shares with 1/2" Bolts on 1.75 to 2.25" centres (ASAE cultivator)
Flat-on C Shank with double bolt, 50 mm wide foot to suit 51° shares with 1/2" Bolts on 1.75 to 2.25" centres (ASAE chisel plough)
Straight tine with double bolt, 44.5 mm wide foot to suit 47° shares with 1/2" Bolts on 1.75 to 2.25" centres (ASAE cultivator)

Optional equipment

- KEE Ultra sonic auto hitch
- Tine Spring Compressor
- Spring Tine Harrows

The manufacturer reserves the right to change specifications without notice and without obligation. Information contained herein is from data available at the time of printing.

HYDRAULIC EQUIPMENT,
HUBS AND WHEELS
NOT SHOWN



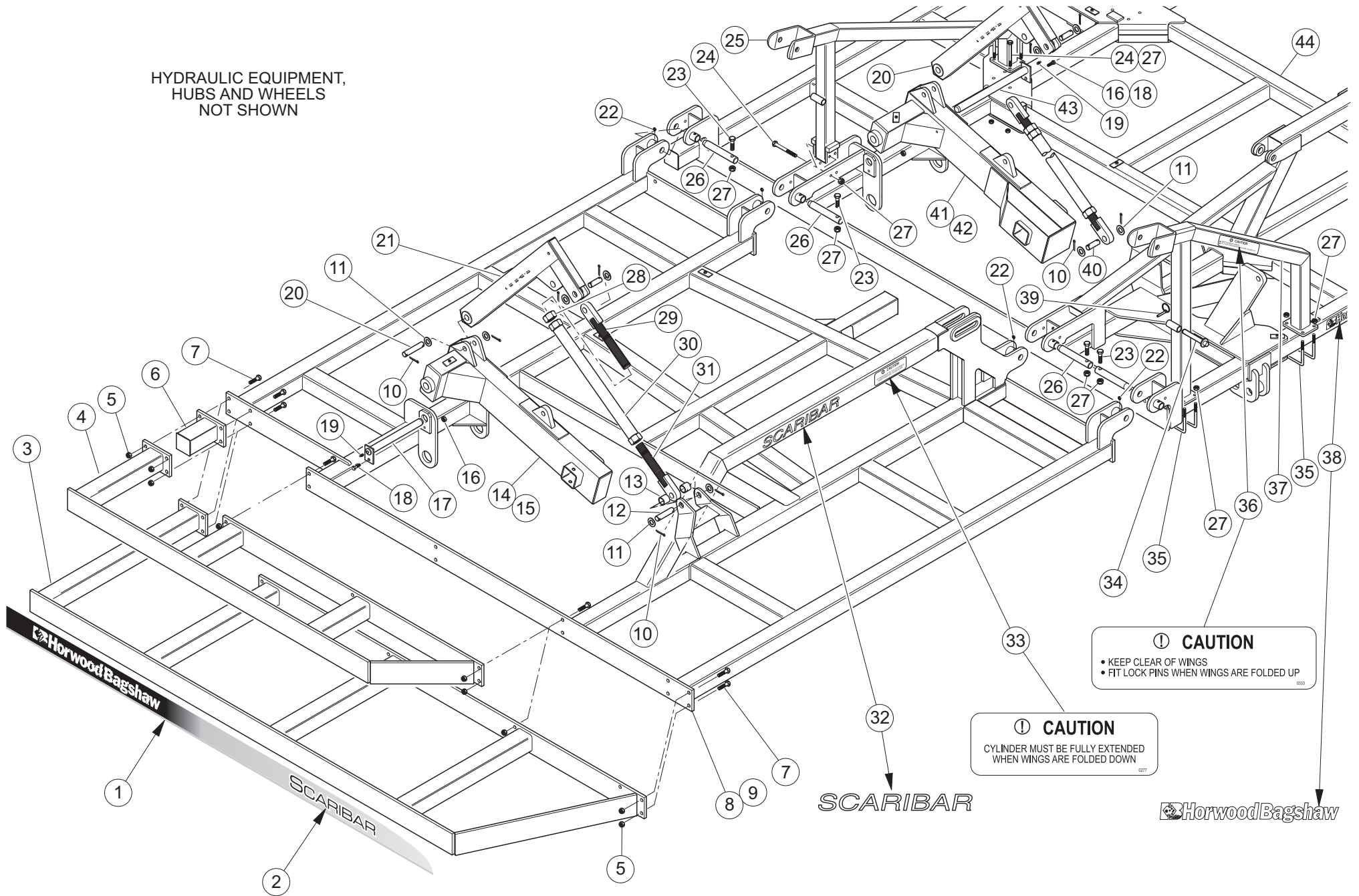
⚠ CAUTION
 • KEEP CLEAR OF WINGS
 • FIT LOCK PINS WHEN WINGS ARE FOLDED UP
 0333

⚠ CAUTION
 CYLINDER MUST BE FULLY EXTENDED
 WHEN WINGS ARE FOLDED DOWN
 0277

ITEM	PART No.	QTY	DESCRIPTION
1	HW090359	2	Decal - graduations long L.H & R.H.
2	HW090292	2	Decal - Scaribar
3	SB821702	2	Wing Extension (35' only)
4	FA4296025	AR	Nut - nyloc M16
5	FA4192108	AR	Bolt - hex M16 x 60
6	SB823311	1	Frame Assy - R.H. wing 2.6 m
7	SB823310	1	Frame Assy - L.H. wing 2.6 m
8	FA4691195	24	Pin - split Ø6.3 x 63
9	FA4391010	24	Washer - flat Ø30
10	SB820749	2	Pin - turnbuckle
11	SB820748	2	Spacer - turnbuckle long
12	SB820723	1	Wheel Arm Assy - R.H. wing (3000 kg)
13	SB820722	1	Wheel Arm Assy - L.H. wing (3000 kg)
14	FA4296023	4	Nut - nyloc M10
15	FA4192047	4	Bolt - hex M10 x 50
16	HF4994003	4	Nipple - grease M6 straight
17	SB821194	2	Pin - Assy wheel wing greaseable
18	SB820583	4	Pin - link attaching
19	SB821240	4	Link - wheel arm assy
20	HF4994026	8	Grease nipple - M6 x 45°
21	SB822162	8	Pin - wing pivot Ø32 x 196 long
22	FA4192078	8	Bolt - hex M12 x 55
23	FA4192090	12	Bolt - ht hex hd M12 x 150
24	SB821625	2	Wing Rest Assy - rear 3 mtr track
25	FA4296024	24	Nut - nyloc M12
26	FA4291010	4	Nut - hex M36 R.H. thread
27	SB820589	4	Lug Assy - R.H.
28	SB820586	4	Tube Assy - turnbuckle
29	SB820588	4	Lug Assy - L.H.
30	HW090021	2	Decal - Scaribar white
31	HW090277	2	Decal - fully extend cylinder.....
32	SB808501	8	Clamp - 'U' M12
33	SB740037	2	Pin Assy - wing lock
34	HW090278	2	Decal - fit lock pin.....
35	SB821550	1	Frame Assy - centre welded
36	HW090019	1	Decal - Horwood Bagshaw
37	SB821619	2	Wing Rest Assy - front 3 mtr track
38	FA4692001	2	Pin - lynch
39	SB820720	1	Wheel Arm Assy - R.H. (5000 kg)

ITEM	PART No.	QTY	DESCRIPTION
40	SB820721	1	Wheel Arm Assy - L.H. (5000 kg)
41	SB821195	2	Pin Assy - wheel centre
42	SB820582	6	Pin - turnbuckle
	SB820585	4	Turnbuckle assy - wheel items 25-28

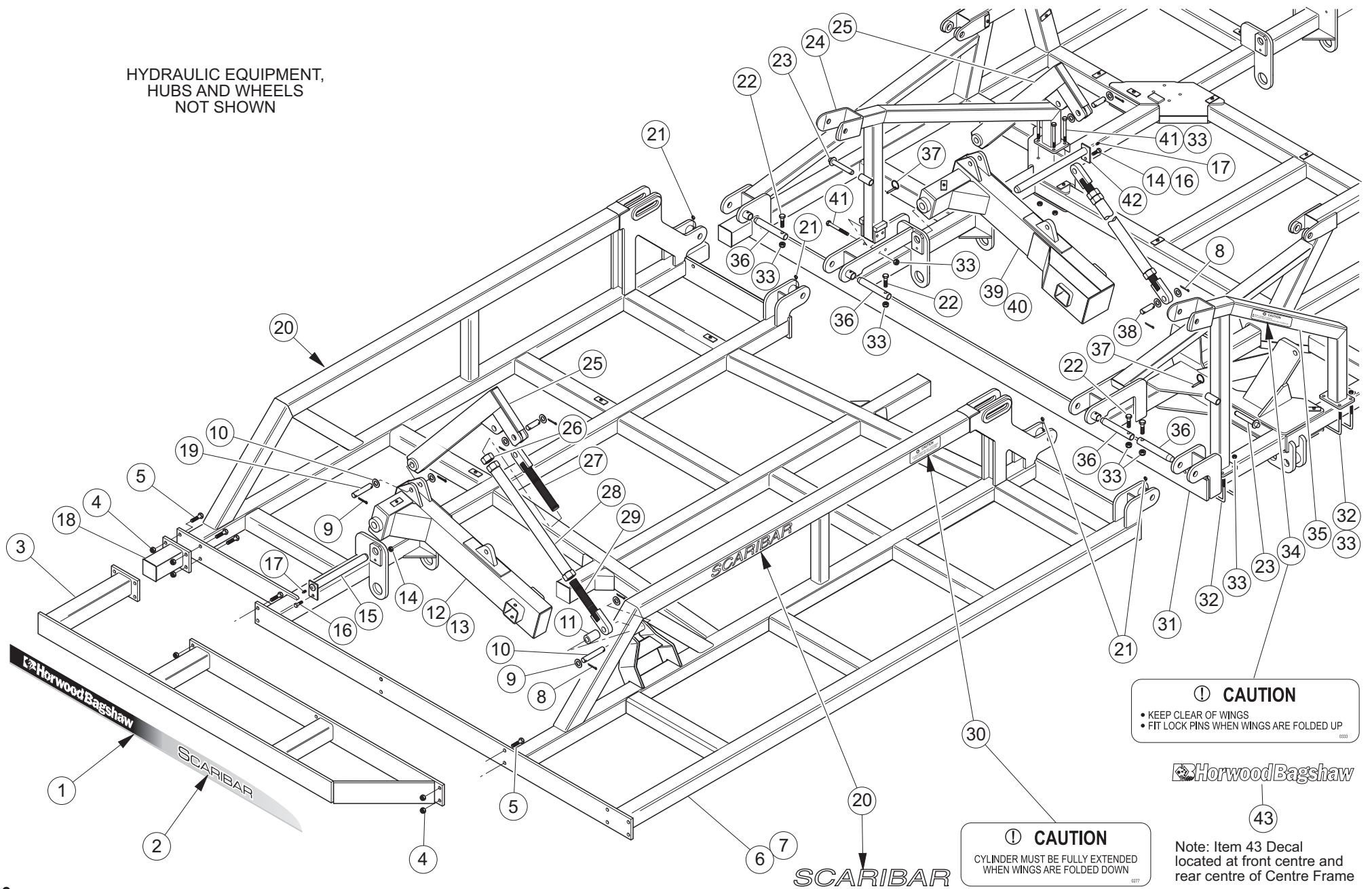
HYDRAULIC EQUIPMENT,
HUBS AND WHEELS
NOT SHOWN



ITEM	PART No.	QTY	DESCRIPTION
1	HW090359	2	Decal - graduations long L.H & R.H.
2	HW090292	2	Decal - Scaribar
3	SB821540	2	Wing Extension (39' only)
4	SB821541	2	Wing Extension (36' only)
5	FA4296025	AR	Nut - nyloc M16
6	SB821539	2	Single Tine Extension (34' only)
7	FA4192108	AR	Bolt - hex M16 x 60
8	SB823313	1	Frame Assy - R.H. wing 3.1 m
9	SB823312	1	Frame Assy - L.H. wing 3.1 m
10	FA4691195	24	Pin - split Ø6.3 x 63
11	FA4391010	24	Washer - flat Ø30
12	SB820749	2	Pin - turnbuckle
13	SB820748	2	Spacer - turnbuckle long
14	SB820723	1	Wheel Arm Assy - R.H. wing (3000 kg)
15	SB820722	1	Wheel Arm Assy - L.H. wing (3000 kg)
16	FA4296023	4	Nut - nyloc M10
17	SB821194	2	Pin - Assy wheel wing greaseable
18	FA4192047	4	Bolt - hex M10 x 50
19	HF4994003	4	Nipple - grease M6 straight
20	SB820583	4	Pin - link attaching
21	SB821240	4	Link - wheel arm assy
22	HF4994026	8	Grease nipple - M6 x 45°
23	FA4192078	8	Bolt - hex M12 x 55
24	FA4192090	12	Bolt - ht hex hd M12 x 150
25	SB821632	2	Wing Rest Assy - rear med centre
26	SB822162	8	Pin - wing pivot Ø32 x 196 long
27	FA4296024	22	Nut - nyloc M12
28	FA4291010	4	Nut - hex M36 R.H. thread
29	SB820589	4	Lug Assy - R.H.
30	SB820586	4	Tube Assy - turnbuckle
31	SB820588	4	Lug Assy - L.H.
32	HW090021	2	Decal - Scaribar white
33	HW090277	2	Decal - fully extend cylinder.....
34	SB740037	2	Pin Assy - wing lock
35	SB808501	8	Clamp - 'U' M12
36	HW090278	2	Decal - fit lock pin.....
37	SB821620	2	Wing Rest Assy - front 3 mtr track
38	HW090019	2	Decal - Horwood Bagshaw
39	FA4692001	2	Pin - lynch

ITEM	PART No.	QTY	DESCRIPTION
40	SB820582	6	Pin - turnbuckle
41	SB820720	1	Wheel Arm Assy - R.H. (5000 kg)
42	SB820721	1	Wheel Arm Assy - L.H. (5000 kg)
43	SB821195	2	Pin Assy - wheel centre
44	SB821550	1	Frame Assy - centre welded
	SB820585	4	Turnbuckle assy - wheel items 28-31

HYDRAULIC EQUIPMENT,
HUBS AND WHEELS
NOT SHOWN



⚠ CAUTION
 • KEEP CLEAR OF WINGS
 • FIT LOCK PINS WHEN WINGS ARE FOLDED UP

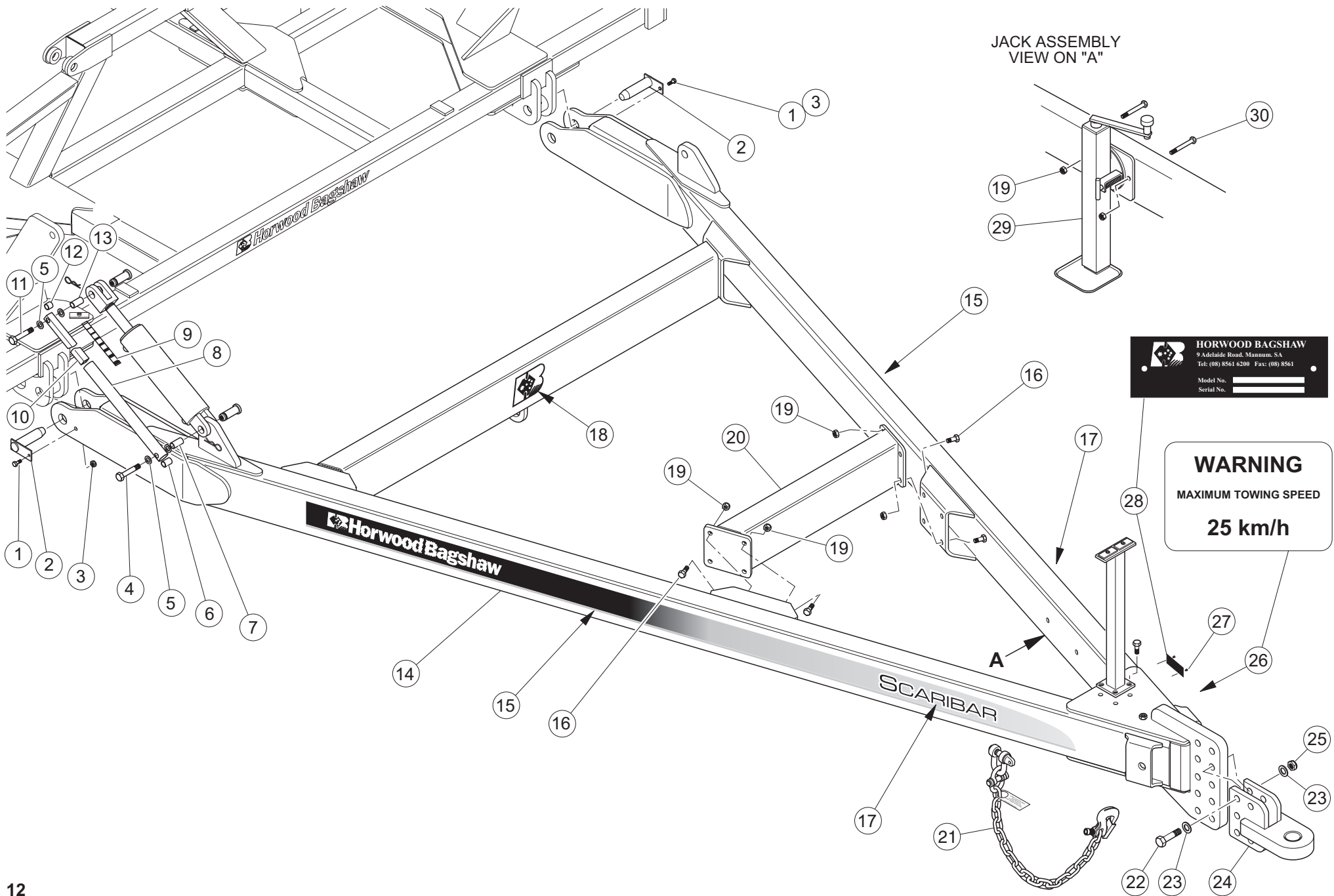
⚠ CAUTION
 CYLINDER MUST BE FULLY EXTENDED
 WHEN WINGS ARE FOLDED DOWN

Horwood Bagshaw
 43

Note: Item 43 Decal located at front centre and rear centre of Centre Frame

ITEM	PART No.	QTY	DESCRIPTION
1	HW090359	2	Decal - graduations long L.H & R.H.
2	HW090292	2	Decal - Scaribar
3	SB821541	2	Wing Extension (41' only)
4	FA4296025	AR	Nut - nyloc M16
5	FA4192108	AR	Bolt - hex M16 x 60
6	SB823317	1	Frame Assy - R.H. wing 3.8 m
7	SB823316	1	Frame Assy - L.H. wing 3.8 m
8	FA4691195	24	Pin - split Ø6.3 x 63
9	FA4391010	24	Washer - flat Ø30
10	SB820749	2	Pin - turnbuckle long
11	SB820748	2	Spacer - turnbuckle long
12	SB820723	1	Wheel Arm Assy - R.H. wing (3000 kg)
13	SB820722	1	Wheel Arm Assy - L.H. wing (3000 kg)
14	FA4296023	4	Nut - nyloc M10
15	SB821194	2	Pin Assy - wheel wing greaseable
16	FA4192047	4	Bolt - hex M10 x 50
17	HF4994003	8	Nipple - grease M6 straight
18	SB821539	2	Single Tine Extension (38' only)
19	SB820583	4	Pin - link attaching
20	HW090021	4	Decal - Scaribar white
21	HF4994026	8	Grease nipple - M6 x45°
22	FA4192078	6	Bolt - hex M12 x 55
23	SB740037	2	Pin Assy - wing lock
24	SB821632	2	Wing Rest Assy - rear medium centre
25	SB821240	4	Link Assy - wheel
26	FA4291010	4	Nut - hex M36 R.H. thread
27	SB820589	4	Lug Assy - R.H.
28	SB820586	4	Tube Assy - turnbuckle
29	SB820588	4	Lug Assy - L.H.
30	HW090277	2	Decal - fully extend cylinder.....
31	SB821551	1	Frame Assy - centre welded
32	HH808501	8	Clamp - 'U' M12
33	FA4296024	24	Nut - nyloc M12
34	HW090278	2	Decal - fit lock pin.....
35	SB821620	2	Wing Rest Assy - front 3 mtr track
36	SB822162	8	Pin - wing pivot Ø32 x 196 long
37	FA4692001	2	Pin - lynch
38	SB820582	6	Pin - turnbuckle

ITEM	PART No.	QTY	DESCRIPTION
39	SB820720	1	Wheel Arm Assy - R.H. (5000 kg)
40	SB820721	1	Wheel Arm Assy - L.H. (5000 kg)
41	FA4192090	12	Bolt - ht hex hd M12 x 150
42	SB821195	2	Pin Assy - wheel centre greaseable
43	HW090019	2	Decal - Horwood Bagshaw
	SB820585	4	Turnbuckle Assy - wheel items 26-29

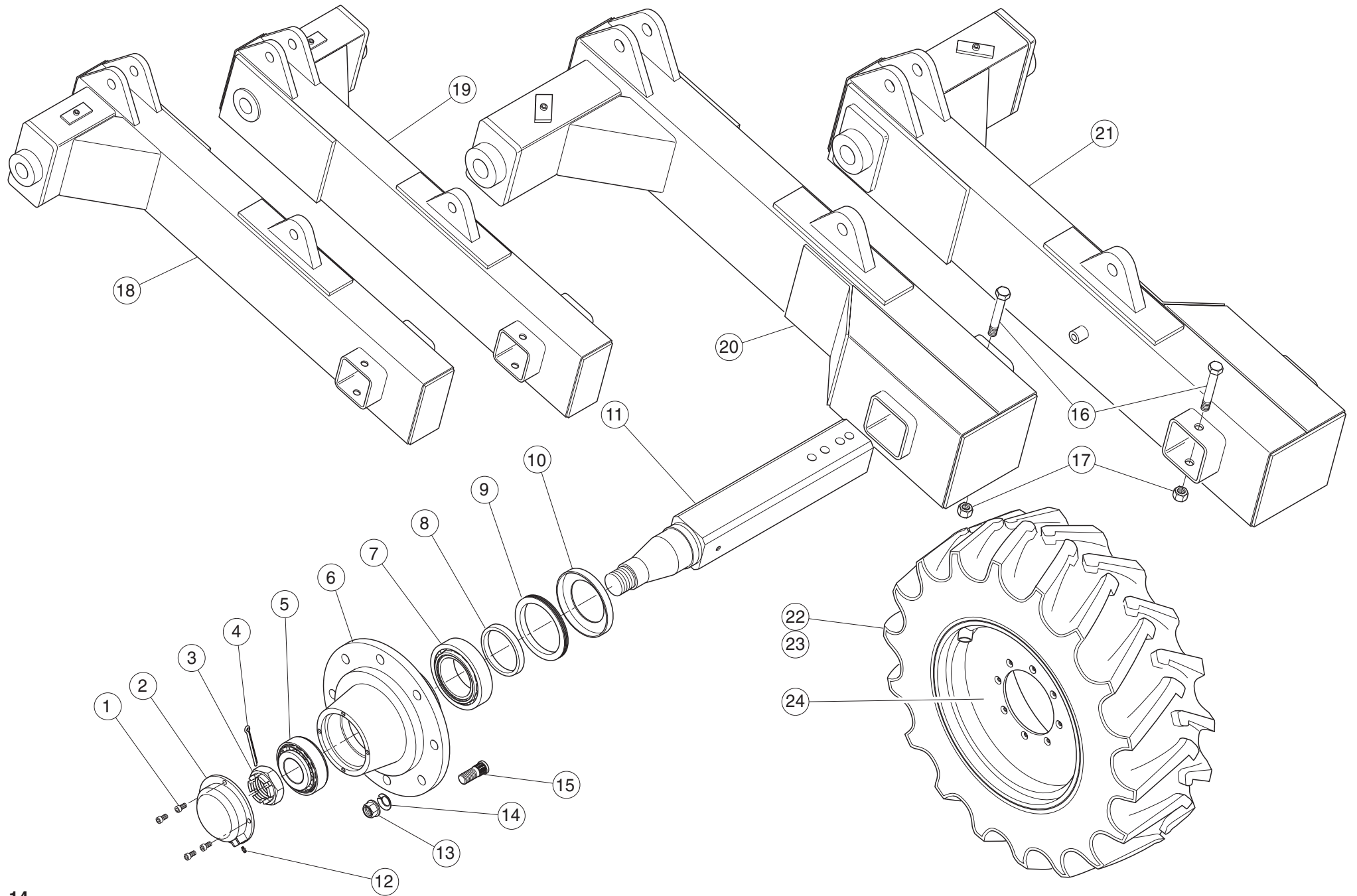


JACK ASSEMBLY
VIEW ON "A"

HORWOOD BAGSHAW
 9 Adelaide Road, Mannum SA
 Tel: (08) 8561 6200 Fax: (08) 8561
 Model No. _____
 Serial No. _____

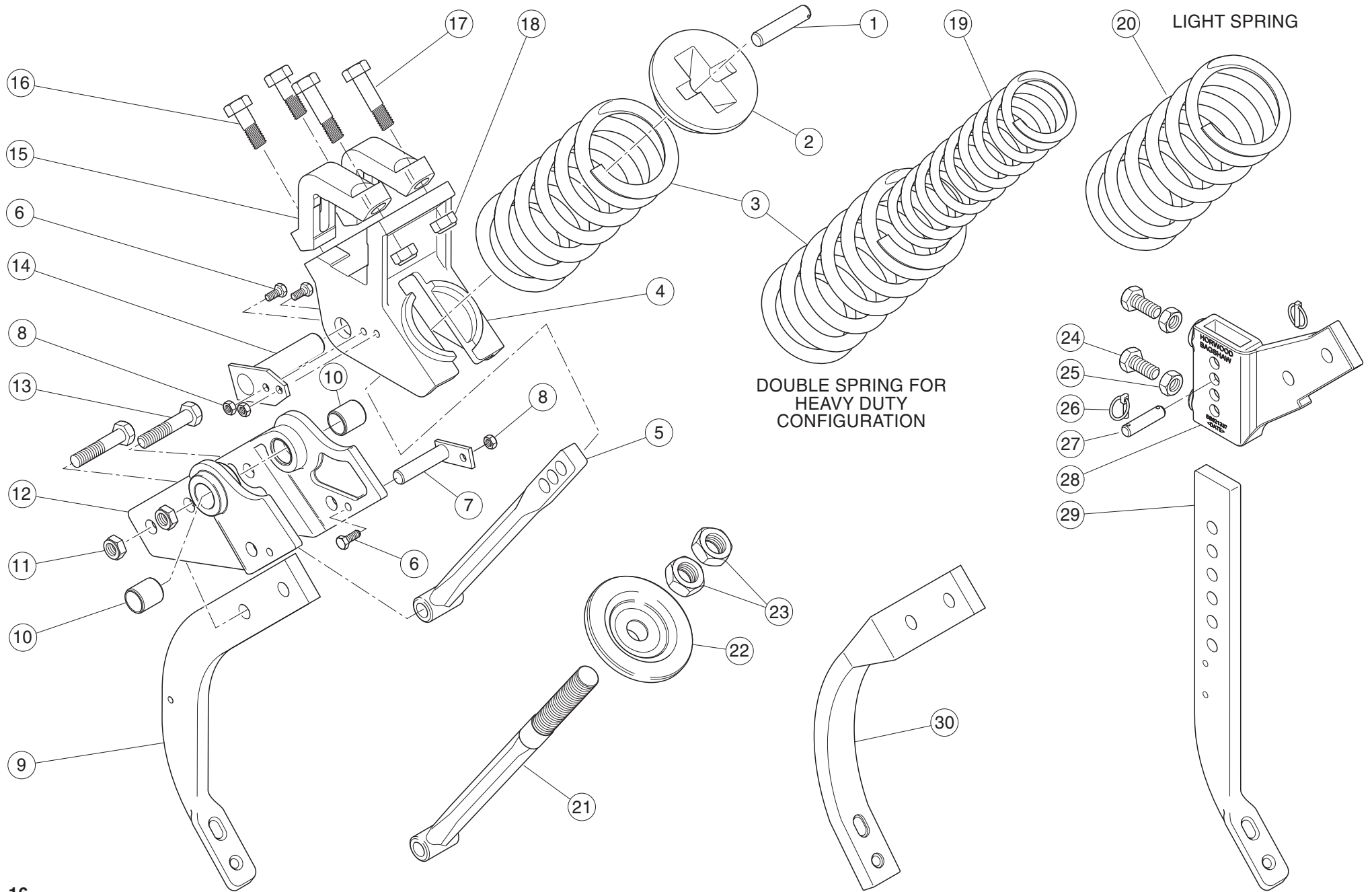
WARNING
 MAXIMUM TOWING SPEED
25 km/h

ITEM	PART No.	QTY	DESCRIPTION
1	FA4192105	2	Bolt - hex hd M16 x 45
2	SB821610	2	Pin - Assy hitch
3	FA4296025	2	Nut - hex nyloc M16
4	FA4192085	1	Bolt - ht hex hd M12 x 90
5	FA4391006	4	Washer - flat M12
6	SB820448	1	Spacer - Ø44 tube
7	SB820445	1	Spacer - indicator
8	SB820444	1	Tube - outer hitch angle indicator
9	SB820449	1	Decal - depth indicator
10	SB820443	1	Tube - hitch angle indicator
11	FA4192084	1	Bolt - ht hex hd M12 x 85
12	SB820446	1	Spacer - 30 sq tube
13	SB820447	1	Spacer - indicator
14	SB821640	1	A Frame - welded assy M/C
15	HW090359	1	Decal - graduations long L.H. & R.H.
16	FA4192105	16	Bolt - hex M16 x 45
17	HW090292	2	Decal - Scaribar
18	HW090011	1	Decal - HB logo small
19	FA4296025	18	Nut - nyloc M16
20	SB821639	1	Beam Assy – front tie M/C
21	SB822094	1	Safety Chain Assy - 18000 kg hook
22	FA4192155	5	Bolt - ht hex hd M24 x 130
23	FA4399052	10	Washer - M24 structural
24	SB821375	1	Tongue Assy
25	FA4296028	3	Nut - nyloc M24
26	SB380879	1	Decal - "max towing speed"
27	FA4494050	2	Screw - hammer 8 x 3/8" 'U'
28	AS0111037900	1	Name Plate
29	SB820936	1	Jack Assy - 3000 kg (static load)
30	FA4192118	2	Bolt - ht hex hd M16 x 130



ITEM	PART No.	QTY	DESCRIPTION
Slide-In Stub Axle (per assembly)			
1	HW090124	4	Set screw - s/hd cap
2	HW090125	1	Dust Cap
3	HW090126	1	Nut - slotted 45 x 2
4	HW090127	1	Pin - split Ø8 x 80
5	HW090128	1	Bearing - 55 x 120 x 31.5 - 30311
6	HW090129	1	Hub - machined
7	HW090130	1	Bearing - 80 x 140 x 35.25 - 32216
8	HW090131	1	Seal Ring
9	HW090132	1	Seal - 140 x 100x 12 - 3 lip
10	HW090133	1	Seal - ring
11	HW090134	1	Stub Axle
12	HW090135	1	Grease nipple
13	HW090136	8	Nut - wheel M20
14	HW090137	8	Washer - split spherical M20
15	HW090138	8	Stud - wheel M20
	SB820715	1	Hub and Stub Assembly - (slide-in 550 mm) items 1-15

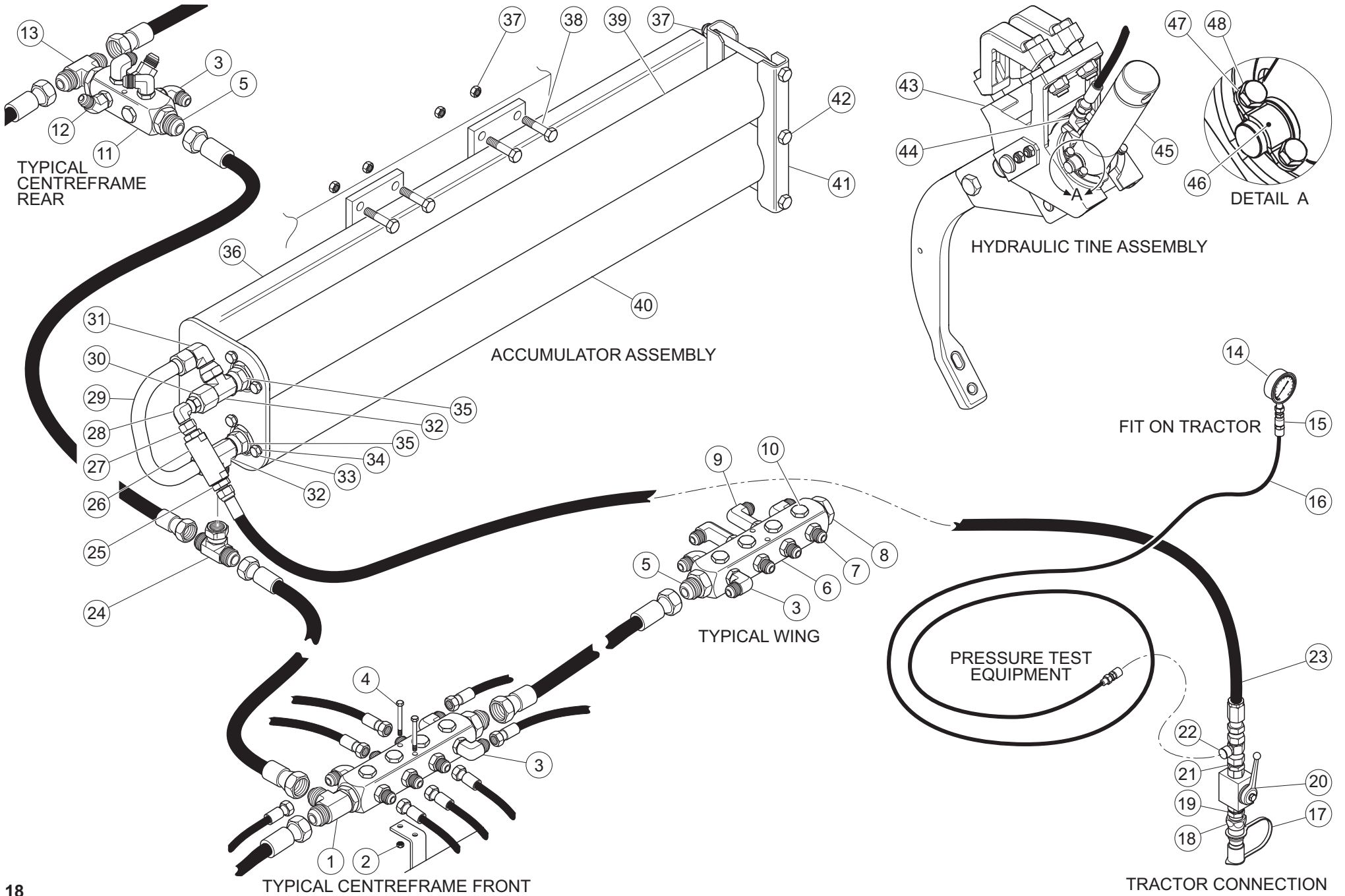
ITEM	PART No.	QTY	DESCRIPTION
Wheel Arms (per machine)			
16	FA4192117	4	Bolt – ht hex hd M16 x 120
17	FA4296025	4	Nut - nyloc M16
18	SB820723	1	Wheel Arm Assy - R.H. wing (3000 kg)
19	SB820722	1	Wheel Arm Assy - L.H. wing (3000 kg)
20	SB820721	1	Wheel Arm Assy - L.H. centre (5000 kg)
21	SB820720	1	Wheel Arm Assy - R.H. centre (5000 kg)
22	WH040009	4	Tyre - 15.5/80 x 24 12 ply (includes item 23)
23	WH58930020	4	Tube - 14.9 x 24
24	SB820713	4	Wheel Assy - W12 x 24 (50 mm offset)
	SB820714	4	Wheel Assy -15.5/80 x 24 (50 mm offset) items 22-24
	SB820715	4	Hub and Stub Assembly - (slide-in 550 mm) items 1-15



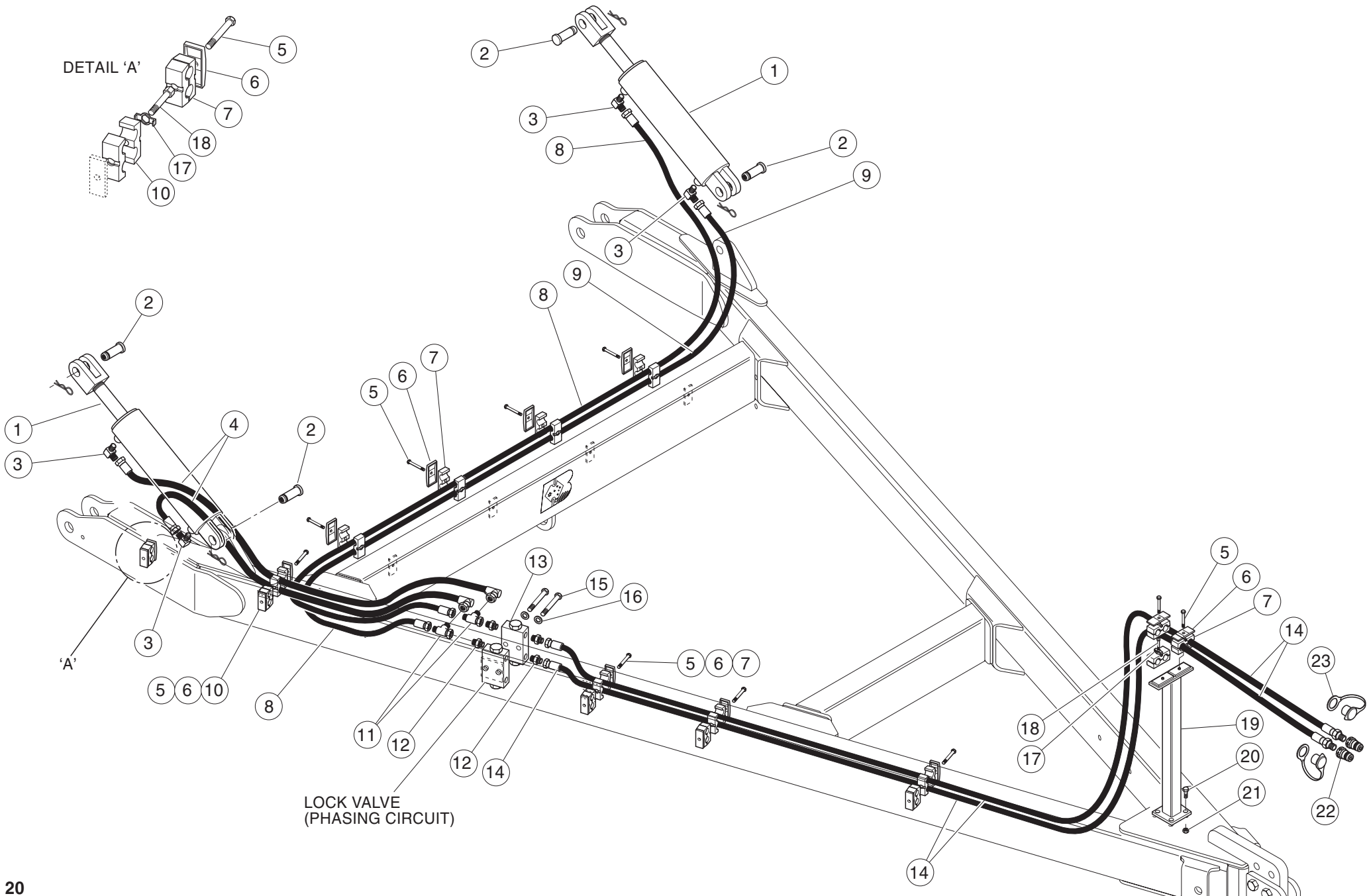
ITEM	PART No.	QTY	DESCRIPTION
Tine Assembly Components (per assembly)			
1	SB820026	1	Pin - spring
2	SB820020	1	Cap - spring
3	SB820029	1	Spring - tine
4	SB820027	1	Pivot - tine
5	SB820030	1	Rod Assy - pressure
6	FA4491014	3	Set screw - M10 x 30
7	SB820036	1	Pin Assy - rod
8	FA4296023	3	Nut - nyloc M10
9	SB820919	1	Tine shank - 2 bolt (suits 47° points)
10	SB820039	2	Bush - tine pivot
11	FA4296026	2	Nut - nyloc M20
12	SB821331	1	Tine bracket - 1 piece (replaces SB820016 & SB820015)
13	FA4192127	2	Bolt - ht hex hd M20 x 70
14	SB820946	1	Pin - pivot assy, tine
15	SB820906	2	Clamp - top
16	FA000013	2	Bolt - ht hex hd M20 x 70, black zinc
17	FA000014	2	Bolt - ht hex hd M20 x 90, black zinc
18	FA4296032	2	Nut - nyloc M20, black zinc
19	SB820614	1	Spring - heavy duty, inner spring
20	SB820655	1	Spring - light duty
21	SB821334	1	Pressure Rod - screw adjust
22	SB821333	1	Cap - spring, screw adjust
23	FA000030	2	Nut - hex RH M30 x 2 normal
24	SB820489	2	Bolt - tine clamping
25	FA4296006	2	Nut - hex thin M20
26	FA4692001	2	Lynch pin - 6 mm
27	SB821338	1	Pin - straight tine assy
28	SB821337	1	Adaptor - vertical tine
29	SB820918	1	Tine Shank - vertical (suits 47° points)
30	SB820920	1	Tine - flat on (suits 51° points)

SB821339 Kit - Straight Tine Conversion items, 24-29

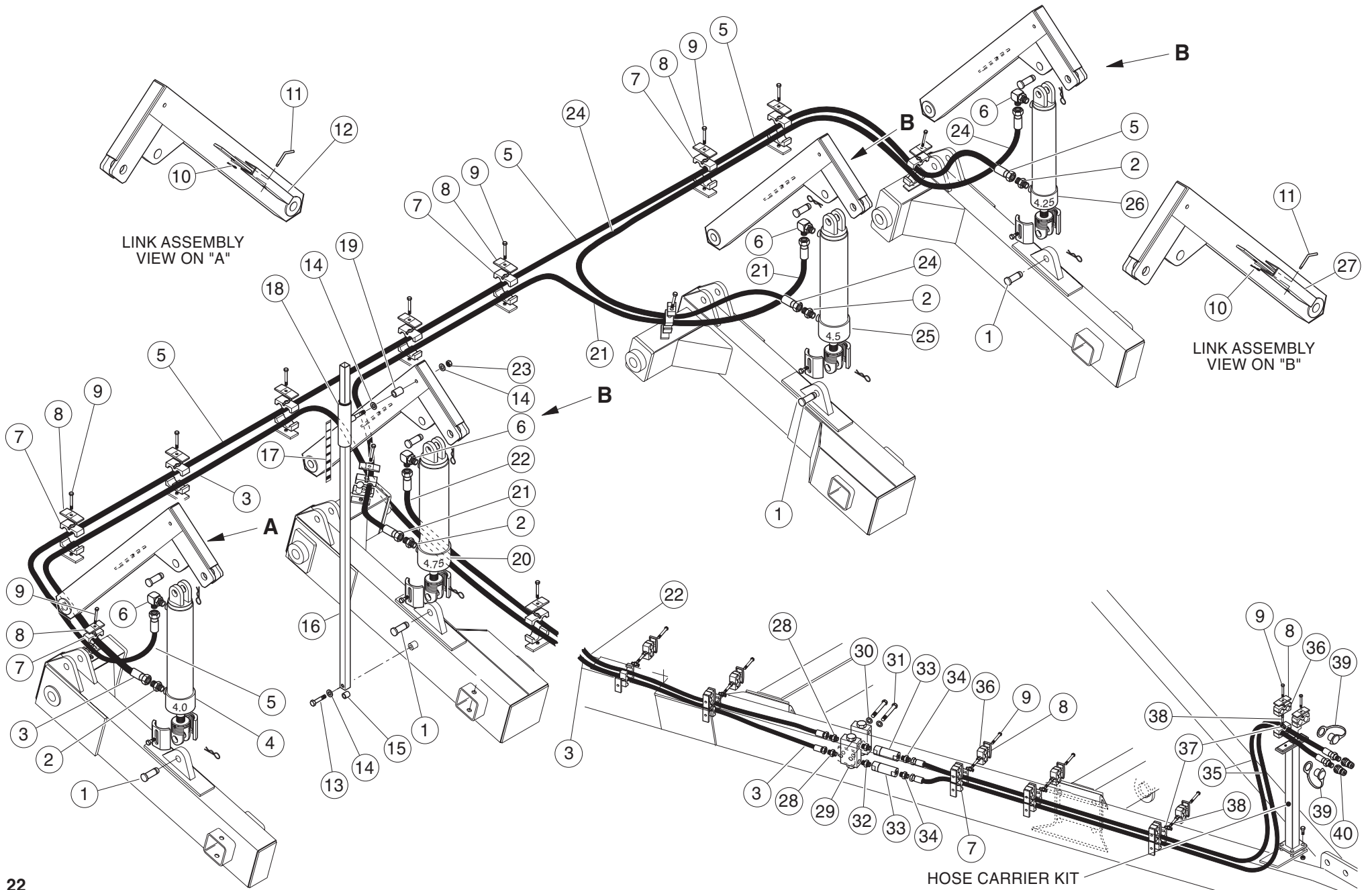
PART No.	DESCRIPTION	
Tine Assemblies Complete		
STANDARD	SCREW ADJUST	
SB820927 items 1-18	SB821309 items 3,4,6-18, 21-23	2 bolt edge - on, standard spring
SB820928 items 1, 2, 4-18,20	SB821310 items 4,6-18, 20-23	2 bolt edge - on, light spring
SB820929 items 1-19	SB821311 items 3A6-19, 21-23	2 bolt edge - on, heavy duty springs
SB820921 items 1-8,10-18,30	SB821312 items 3A6-8,10-18 21-23,30	2 bolt flat - on, std spring
SB820922 items 1,2,4-8,10-18, 20,30	SB821313 items 3,4,6-8,10-18 20-23,30	2 bolt flat - on, light spring'
SB820923 items 1-8,10-19,30	SB821314 items 1-8,10-19 21-23	2 bolt flat - on, heavy duty springs
SB821453 items 1-8, 10-18, 24-29	SB821315 items 3,4,6-8,10-18 21-29	Vertical tine - standard spring
SB821454 items 1,2,4-8,10-18 20,24-29	SB821316 items 4,6-8,10-18 20-29	Vertical tine - light spring
SB821455 items 1,2,4-8,10-19 24-29	SB821317 items 4,13-8,10-19 21-26	Vertical tine - heavy duty spring



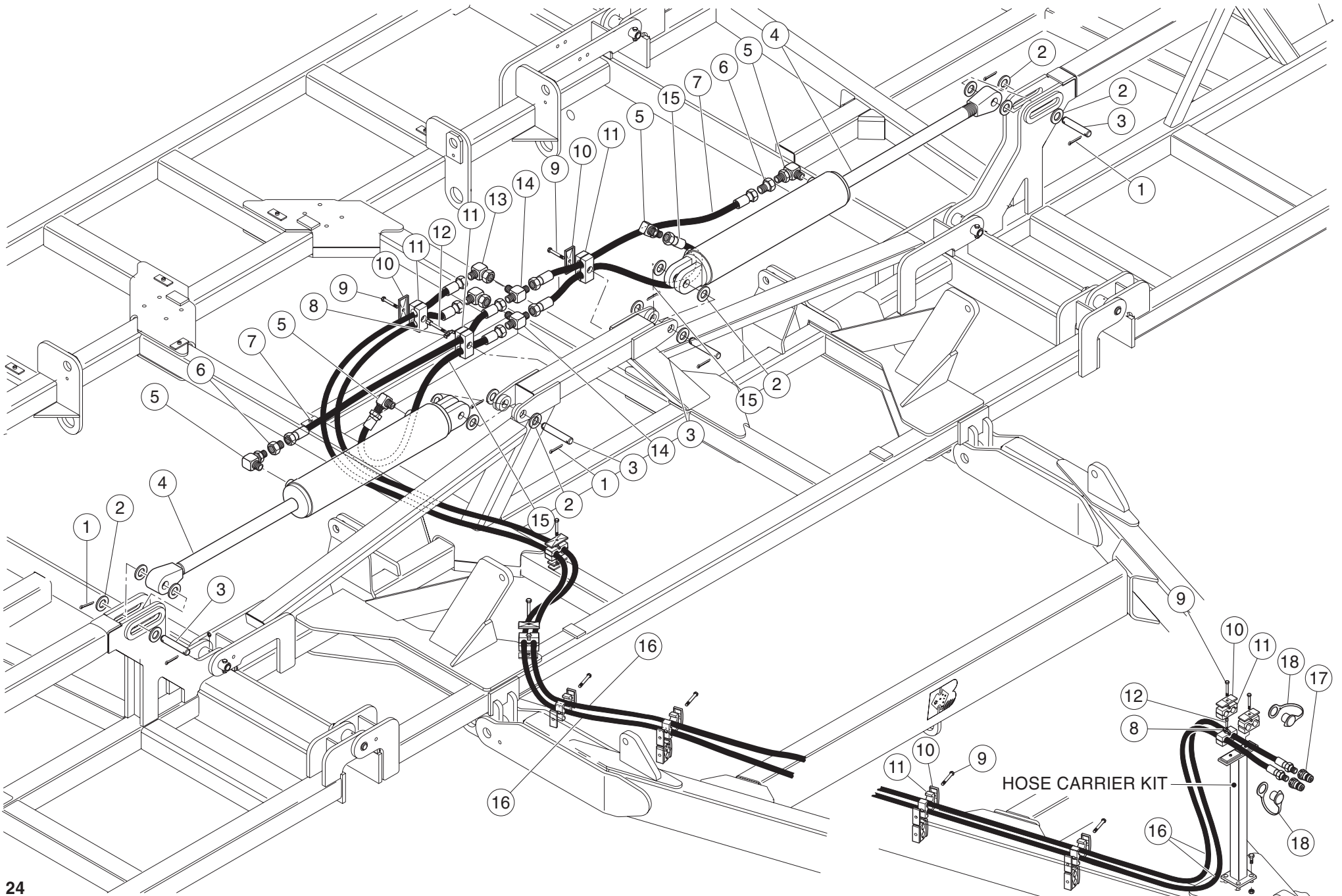
ITEM	PART No.	QTY	DESCRIPTION	ITEM	PART No.	QTY	DESCRIPTION
1	HF5394632	AR	Tee - 1-5/16" JIC M x 1-5/16" UN o-ring x 5/16" JIC M (S87-212121)	36	SB822664	1	Frame Assy - accumulator mnt, 2 x 9.5 ltr.
2	FA4296022	AR	Nut - nyloc M8 type P	37	FA4296025	7	Nut - hex M16
3	HF5394229	AR	Elbow - 7/8" JIC M x 7/8" UN o-ring (S91-1414)	38	FA4192107	4	Bolt - hex hd M16 x 55
4	FA4192032	AR	Bolt - ht hex hd M8 x 75	39	HF020191	1	Accumulator - 9.5 ltr. 1,300 psi precharge
5	HF5394096	AR	Nipple - 1-5/16" JIC M x 1-5/16" UN o-ring (S90-2121)	40	HF020190	1	Accumulator - 9.5 ltr. 250 psi precharge
6	SB822661	AR	Manifold - 14 port (2 x 1-5/16", 12 x 7/8" UN o-ring ports)	41	SB822665A	1	Clamp Half - 4" accumulator
7	HF5394043	AR	Nipple - 7/8" JIC x 7/8" UN o-ring (S90-1414)	42	FA000026	3	Bolt - ht hex hd M16 x 200
8	HF5394509	AR	Plug - 1-5/16" UN o-ring (S97-21)	43	SB820027ADI	1	Tine Pivot Housing - ADI
9	HF5394245		Elbow - 7/8" JIC M x 7/8" UN o-ring 90° extended (S12-1414)	44	HF5394228	1	Elbow - 3/4" UN o-ring x 7/8" JIC (S91-1412) (supplied with cylinder)
10	HF5394508	AR	Plug - 7/8" UN o-ring (S97-14)	45	SB821328	1	Cylinder - hyd cyl
11	SB822660	AR	Manifold - 8 port (2 x 1-5/16", 6 x 7/8" UN o-ring ports)	45	HF020199	AR	Seal Kit - (Lyc0 109720)
12	HF5394244	AR	Elbow - 45° 7/8" JIC M x 7/8" UN o-ring (S88-1414)	46	SB821329	2	Retainer - hyd cyl
13	HF5394635	AR	Tee - 1-5/16" JIC M x 1-5/16" JIC M x 1-5/16" UN o-ring (S92-212121)	47	FA4392004	4	Washer - spring M8
14	HF020201	1	Gauge - pressure 250 Bar Ø100	48	FA4491082	4	Set Screw - hex hd M8 x 16
15	HF020194	1	Adaptor - bulkhead (SMA20-G 1/2)				
16	HF020195	1	Test Hose - 3 metre (R1621-3000)				
17	HF020004	1	Dust Cap - red, plastic (RDC-08)				
18	HF020022	1	Coupling - QR, 1/2" BSPP (R9108M)				
19	HF5394097	1	Nipple - 1/2" BSPT x 3/8" BSPP (S75-0806)				
20	HF020198	1	Valve - ball, 3/8" BSPP (RL20-0606)				
21	HF5394072	1	Nipple - 3/8" BSPP x 3/4" JIC (S74-0612)		SB821321		Tine Assy - hyd, edge-on (less clamps)
22	HF020196	1	Tee - test point (S159-121216)				
23	SB822618	1	Hose - hyd 3/8" x 3/4" JIC F F 8750 long		SB821320		Hydraulic Tine Assy - edge-on complete
24	HF5394633	1	Tee - 1-5/16" JIC M x 1-5/16" JIC M x 1-5/16" JIC F (S68-212121)		SB822670	1	Accumulator Assy - 2 x 9.5 ltr. items, 24-37, 39-42
25	HF5394802	1	Nipple - 1/2" BSPP x 3/4" JIC M (S74-0812)				
26	HF020192	1	Filter - inline, 25 micron/25 l/min				
27	HF5394069	1	Adaptor - 1/2" BSPP x 7/8" JIC F swivel (S71-0814)		HF020193	1	Guage Kit - hydraulic tine scaribar items, 14-16
28	HF5394062	1	Elbow - 7/8" JIC M/F 90° (S15-1414)				
29	SB822669	1	Tube Assy - accumulator connecting				
30	HF5394189	1	Reducer - 1-5/16" JIC F x 7/8" JIC M (C84-2114)		SB822618	1	Hose Assy - accumulator charging 3/8" 8750 long items, 17-23
31	HF5394243	1	Elbow - 1-5/16" JIC M/F 90° (S15-2121)				
32	HF5394636	2	Tee - 1-5/16" JIC M/F/M (S67-212121)				
33	FA4195005	6	Bolt - hex hd 1/2" UNF x 1-1/4"				
34	FA4392055	6	Washer - spring 1/2"				
35	HF5394098	2	Nipple - 1-5/16" JIC x 1-5/16" UN o-ring (S90-2126)				



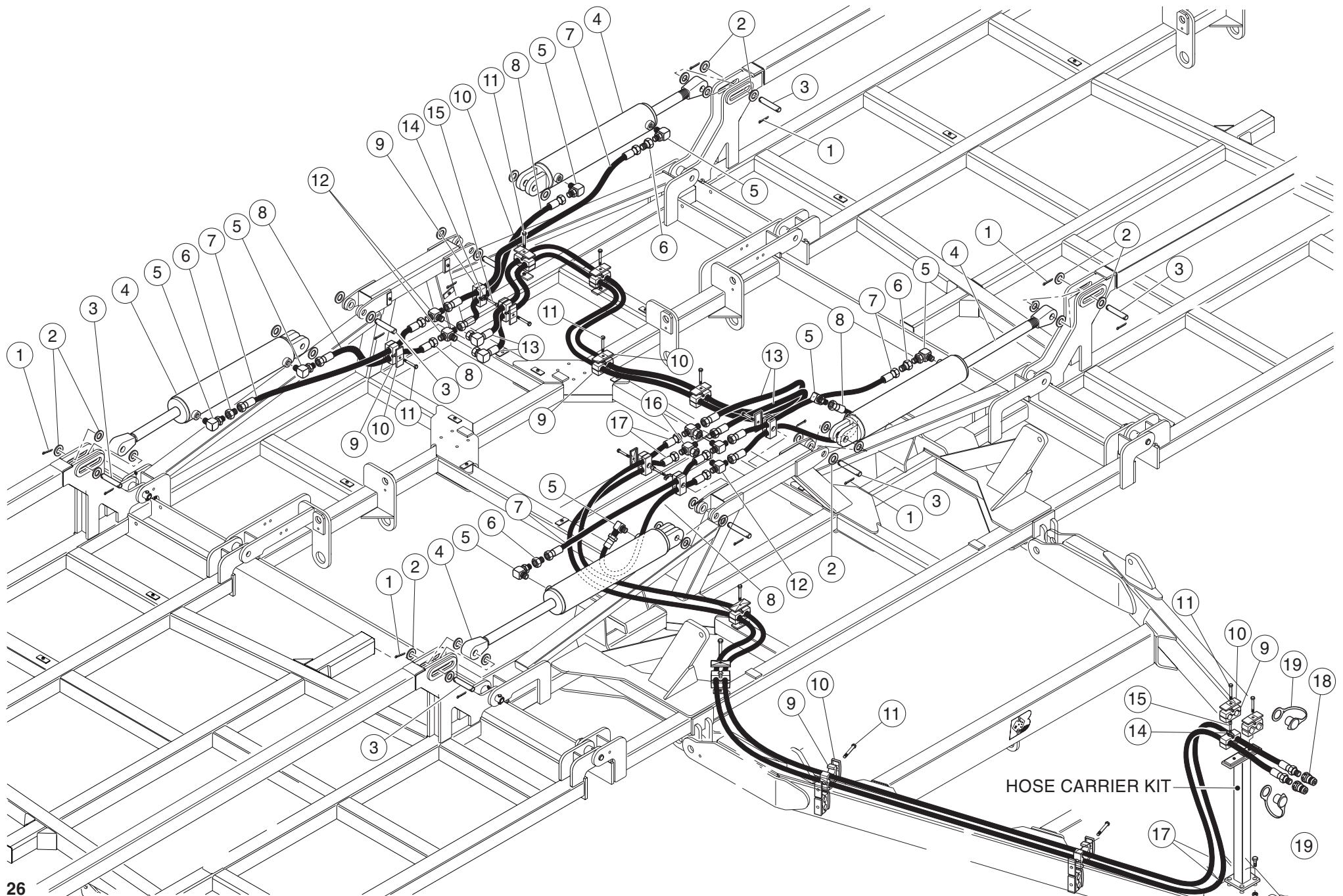
ITEM	PART No.	QTY	DESCRIPTION
1	SB821270	2	Cylinder - hyd Ø4" x 12" PTE
1	HF020123	AR	Seal Kit - hyd 4.0"-1.75" (SKSLM400-1.75) PTE
2	SB820438	4	Pin - with M12 tapped hole, supplied with cylinder
3	HF5394201	4	Elbow - 3/4" JIC o-ring, supplied with cylinder
4	SB821402	2	Hose Assy - hitch 1350
5	HF5398214	8	Bolt - hex M8 x 45
6	HF5398216	AR	Plate - cover
7	HF5398215	AR	Clamp - shell double RCD-19JRED
8	SB821404	1	Hose Assy - hitch 3350
9	SB821403	1	Hose Assy - hitch 2920
10	HF5398222	AR	Clamp - shell double RCD-22JRED
11	HF5394619	2	Tee - 3/4" JIC mfm
12	HF5394001	4	Nipple - 1/2" BSPT x 3/4" JIC
13	HF5398162	1	Lock Valve
14	SB821401	2	Hose Assy - hitch/tractor 5300
15	FA4391202	2	Bolt - hex M10 x 100
16	FA4391005	2	Washer - flat M10
17	HF5398211	AR	Washer - stacking
18	HF5398210	AR	Bolt - stacking M8 x 30
19	SB820616	1	Hose Carrier Assy
20	FA4192074	4	Bolt - hex M12 x 35
21	FA4296024	4	Nut - nyloc M12
22	HF020000	2	Coupling - quick release 1/2" BSPP
23	HF020004	2	Dust cap - red plastic
	SB820615	1	Hose Carrier Kit items 17-23



ITEM	PART No.	2.6 & 3.1 m	3.8 m	DESCRIPTION	ITEM	PART No.	2.6 & 3.1 m	3.8 m	DESCRIPTION
		WINGS	WINGS				WINGS	WINGS	
		30', 34', 35' 36' & 39'	38' & 41'				30', 34', 35' 36' & 39'	38' & 41'	
1	SB820800PN	8	8	Pin - supplied with cylinder	29	HF5398162	1	1	Lock Valve
2	HF5394026	4	4	Nipple - 3/4" UN 'o' ring x 7/8" JIC	30	FA4391005	2	2	Washer - flat Ø10
3	SB821405	1	-	Hose Assy - 1/2" 8350	31	FA4191202	2	2	Bolt - hex M10 x 100
3	SB821411	-	1	Hose Assy - 1/2"	32	HF020002	2	2	Nipple - 1/2" BSPT x 1/2" BSPP
4	SB821275	1	1	Cylinder - 4" x 12" ph SLP D/stop PTE	33	HF020001	2	2	Filter - Inline 60 micron/60L/min
4	HF020128	AR	AR	Seal kit - 4.0 - 1.3/8" (SKSLP-1.38)	34	HF5394801	2	2	Nipple - 7/8" JICM x 1/2" BSPP
5	SB821073	1	-	Hose Assy - 1/2" 10700	35	SB821400	2	2	Hose Assy - 1/2 hitch/tractor 5100
5	SB821414	-	1	Hose Assy - 1/2" 12200	36	HF5398215	AR	AR	Clamp - shell double RCD-19JRED
6	HF5394228	4	4	Elbow - 3/4" UN 'o'ring x 7/8 JICM 90°	37	HF5398211	4	4	Washer - stacking
7	HF5398222	20	20	Clamp - shell double RCD-22JRED	38	HF5398210	4	4	Bolt - stacking M8 x 30
8	HF5398216	17	17	Plate - cover	39	HF020004	2	2	Dust cap - red plastic
9	HF5398214	20	20	Bolt - hex M8 x 45	40	HF020000	2	2	Coupling - quick release 1/2" BSPP
10	HW0147930002	4	4	"R" Clip - 3 mm					
11	SM680331	4	4	Pin transport - stop					
12	SB820699	2	2	Stop - hyd ram 1-1/2"					
13	FA4192077	1	1	Bolt - hex hd ht M12 x 50					
14	FA4391006	3	3	Washer - flat M12					
15	SB820446	1	1	Spacer - 30 sq tube					
16	SB820442	1	1	Tube - depth indicator					
17	SB820449	1	1	Decal - depth indicator					
18	SB820440	1	1	Swivel Assy					
19	SB820445	1	1	Spacer					
20	SB821278	1	1	Cylinder -4.75 x 12" ph Rip D/stop PTE					
20	HF020131	AR	AR	Seal Kit - 4.75-1.5" (SKSLP475-1.5)					
21	SB821410	1	1	Hose Assy - 1/2" 5500					
22	SB820364	1	1	Hose assy - 1/2" 7000					
23	FA4296024	1	1	Nut - nyloc M12					
24	SB820830	1	-	Hose Assy - 1/2" 4950					
24	SB821415	-	1	Hose Assy - 1/2" 5700					
25	SB821277	1	1	Cylinder - 4.5" x 12" ph SLP D/stop PTE					
25	HF020130	AR	AR	Seal Kit - 4.5" - 1.5" (SKSLP450-1.5))					
26	SB821276	1	1	Cylinder - 4.25" x 12" ph SLP D/stop PTE					
26	HF020129	AR	AR	Seal Kit - 4.25" - 1.38" (SKSLP425-1.38)					
26	OT020006	AR	AR	Cylinder - poppet valve					
27	SB820454	2	2	Stop - hyd ram 1.3/8"					
28	HF5394029	2	2	Nipple - 1/2" BSPT x 7/8" JIC					



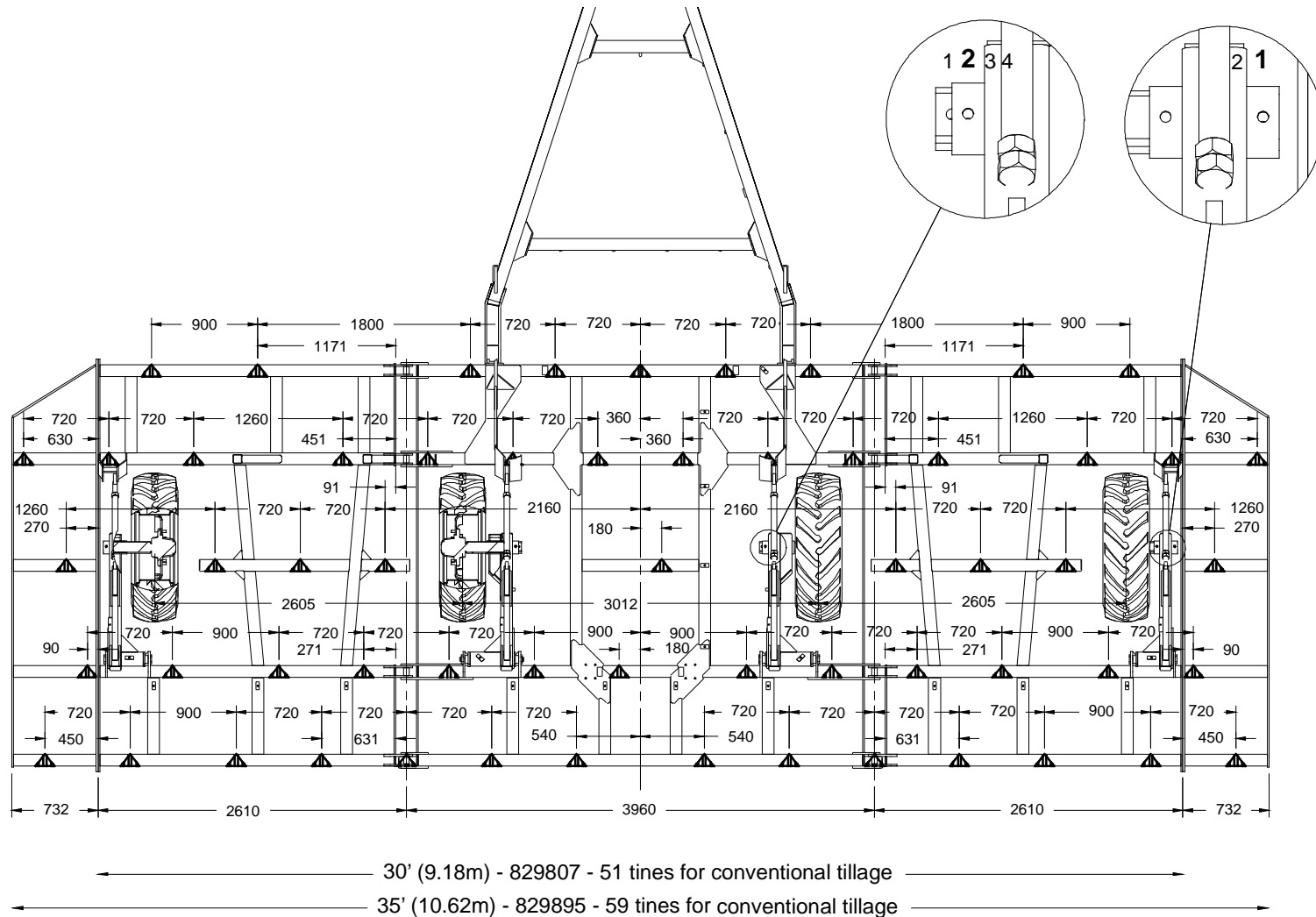
ITEM	PART No.	QTY	DESCRIPTION
1	FA4692000	8	Pin - lynch 11 mm
2	FA4391010	16	Washer - flat Ø30
3	SB821069	4	Ram Pin - wing fold, supplied with cylinder
4	SB821271	2	Cylinder - hyd Ø4.5" x 33" (PTE)
4	HF020124	2	Seal Kit - hyd 4.5" - 1.75" (PTE, SKH0150-29)
5	HF5394201	4	Elbow - 3/4" JIC o-ring, supplied with cylinder
6	HA400205	2	Restrictor
7	SB821412	2	Hose Assy - wing lift
8	HF5398211	2	Washer - stacking
9	FA5398214	6	Bolt - hex M8 x 45
10	HF5398216	6	Plate - cover
11	HF5398215	8	Clamp - shell
12	HF5398210	2	Bolt - stacking M8 x30
13	HF5394053	2	Adaptor - 3/4" JICM x 3/4" JICF x 90°
14	HF5394031	2	Tee - 3/4" JIC MMM
15	SB820368	2	Hose Assy - wing lift 580
16	SB820342	2	Hose Assy - wing lift 9000
17	HF020000	2	Coupling - quick release
18	HF020004	2	Dust cap - red plastic
	SB820615	1	Hose Carrier Kit



ITEM	PART No.	QTY	DESCRIPTION
1	FA4692000	16	Pin - lynch 11 mm
2	FA4391010	32	Washer - flat Ø30
3	SB821069	8	Ram Pin - wing fold, supplied with cylinder
4	SB821271	4	Cylinder - hyd Ø4.5" x 33" (PTE)
4	HF020124	AR	Seal Kit - hyd Ø4.5" x 33" (PTE, SKH0150-29)
5	HF5394201	8	Elbow - 3/4" JIC o-ring, supplied with cylinder
6	HA400205	4	Restrictor
7	SB821412	4	Hose Assy - wing lift 2100
8	SB820368	4	Hose Assy - wing lift
9	HF5398215	13	Clamp - shell
10	HF5398216	9	Plate - cover
11	FA5398214	9	Bolt - hex M8 x 45
12	HF5394031	4	Tee - 3/4" JIC MMM
13	SB821416	2	Hose Assy - wing lift
14	HF5398211	4	Washer - stacking
15	HF5398210	4	Bolt - stacking M8 x 30
16	HF5394627	2	Tee - 3/4" JIC M/M/F
17	SB820342	2	Hose Assy - wing lift 9000
18	HF020000	2	Coupling - quick release
19	HF020004	2	Dust cap - red plastic
	SB820615	1	Hose Carrier Kit

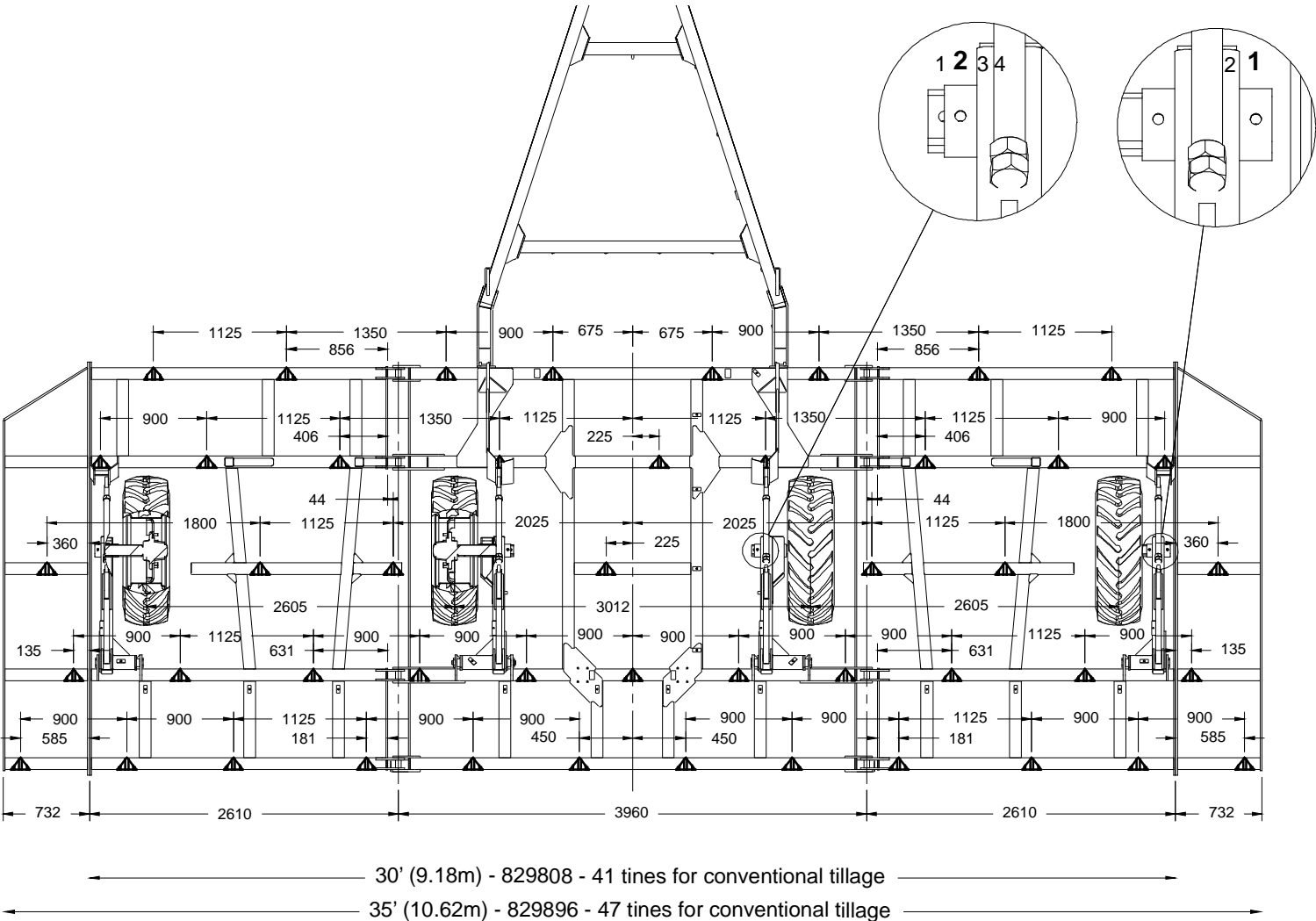
30' Scaribar with 51 Tines
35' Scaribar with 59 Tines

Medium Centre @ 7" (180 mm) Spacing



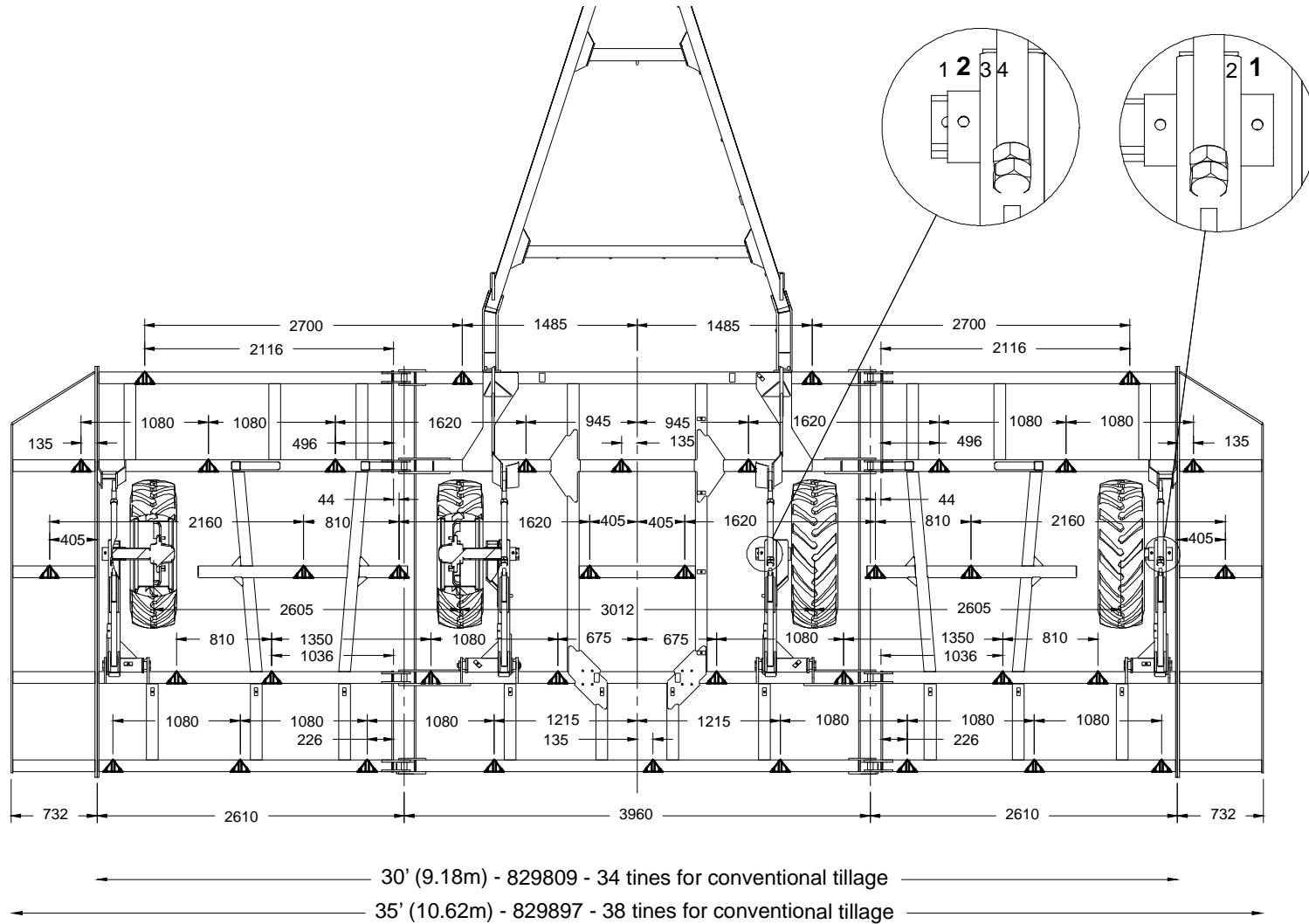
30' Scaribar with 41 Tines
35' Scaribar with 47 Tines

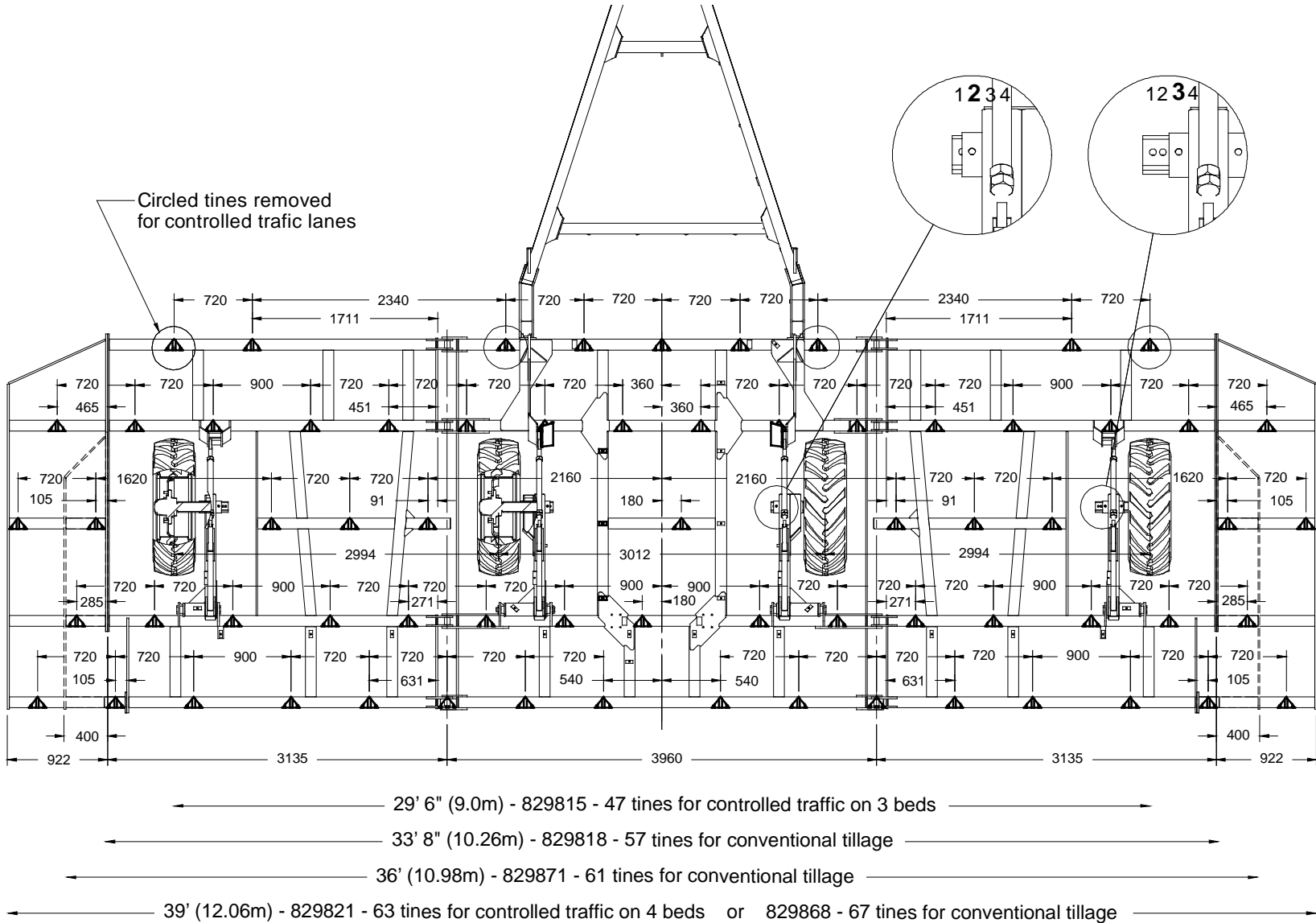
Medium Centre @ 8³/₄" (225 mm) Spacing

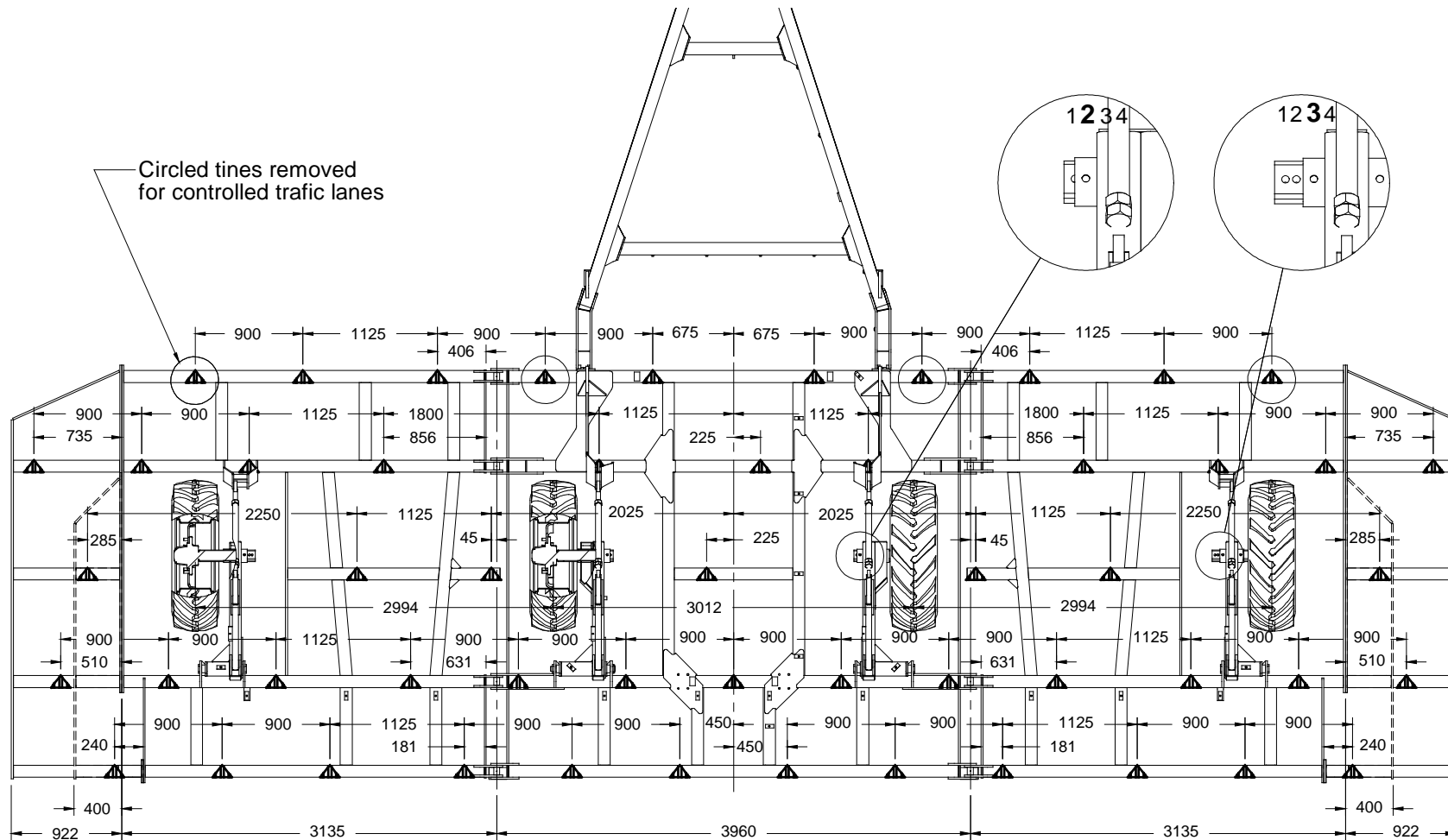


30' Scaribar with 34 Tines
35' Scaribar with 38 Tines

Medium Centre @ 10¹/₂" (270 mm) Spacing





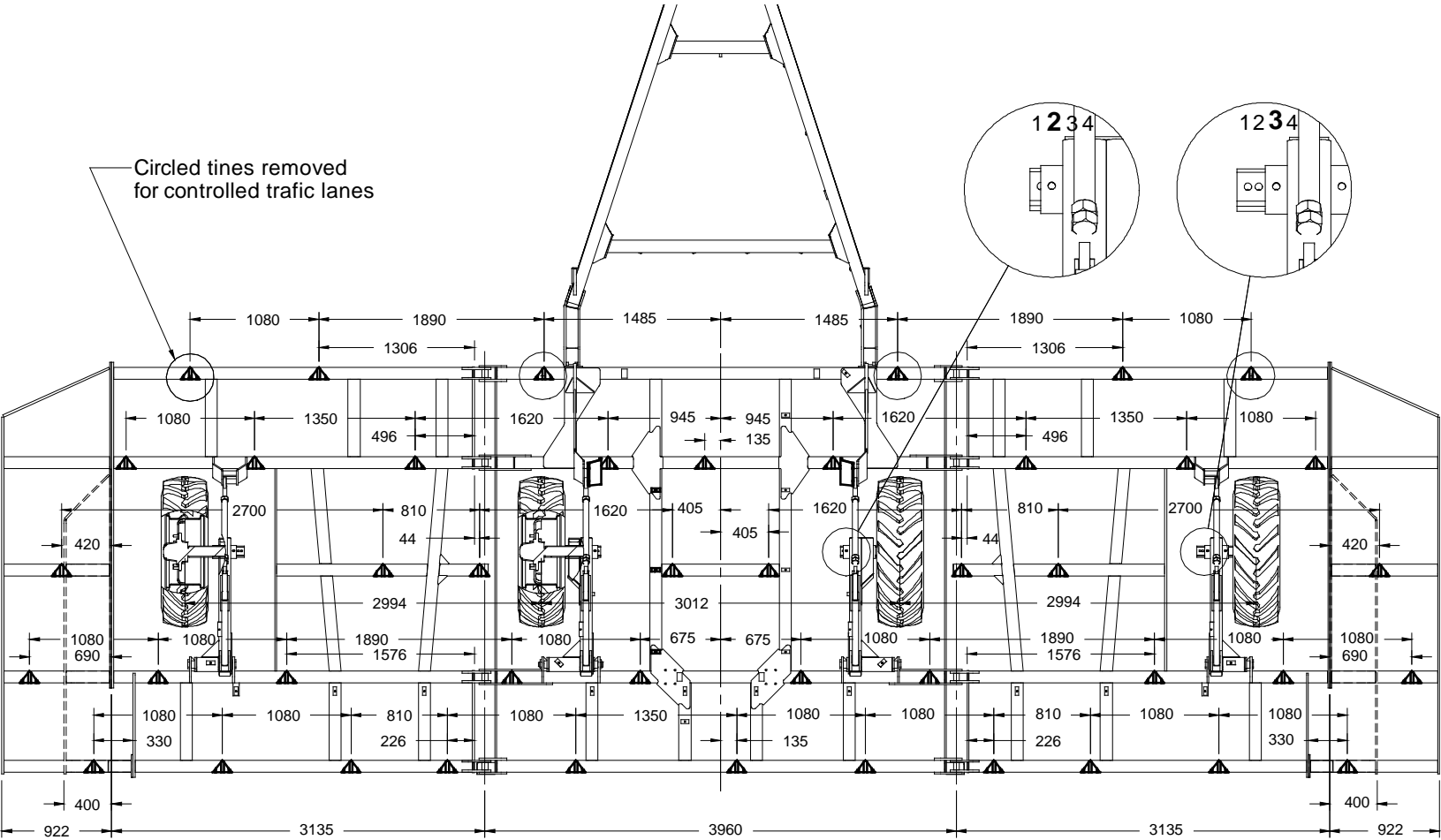


29' 6" (9.0m) - 829816 - 37 tines for controlled traffic on 3 beds

33' 8" (10.26m) - 829819 - 45 tines for conventional tillage

36' (10.98m) - 829872 - 49 tines for conventional tillage

39' (12.06m) - 829822 - 49 tines for controlled traffic on 4 beds or 829869 - 53 tines for conventional tillage



← 29' 6" (9.0m) - 829817 - 30 tines for controlled traffic on 3 beds →

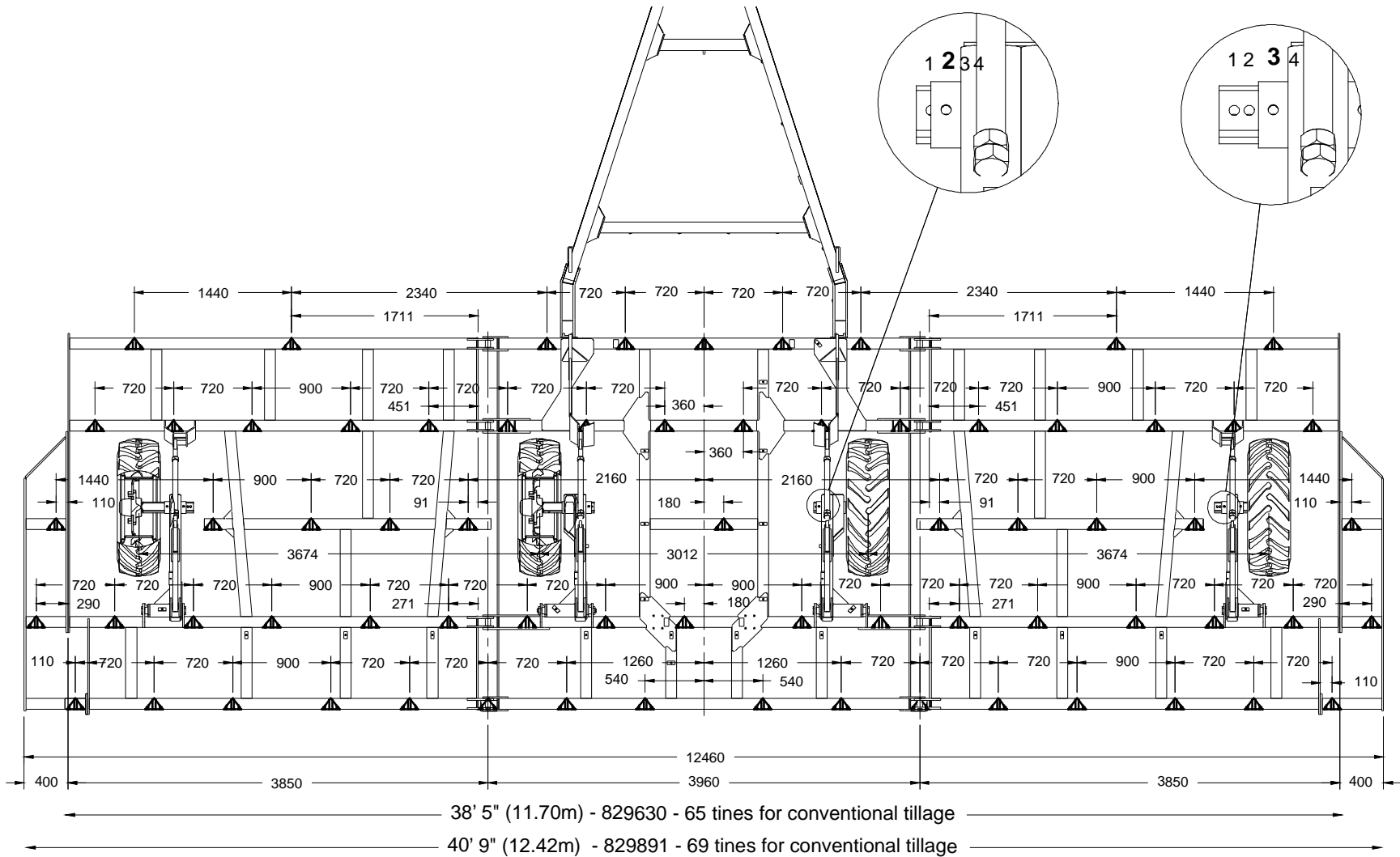
← 33' 8" (10.26m) - 829820 - 38 tines for conventional tillage →

← 36' (10.98m) - 829873 - 40 tines for conventional tillage →

← 39' (12.06m) - 829823 - 40 tines for controlled traffic on 4 beds or 829870 - 44 tines for conventional tillage →

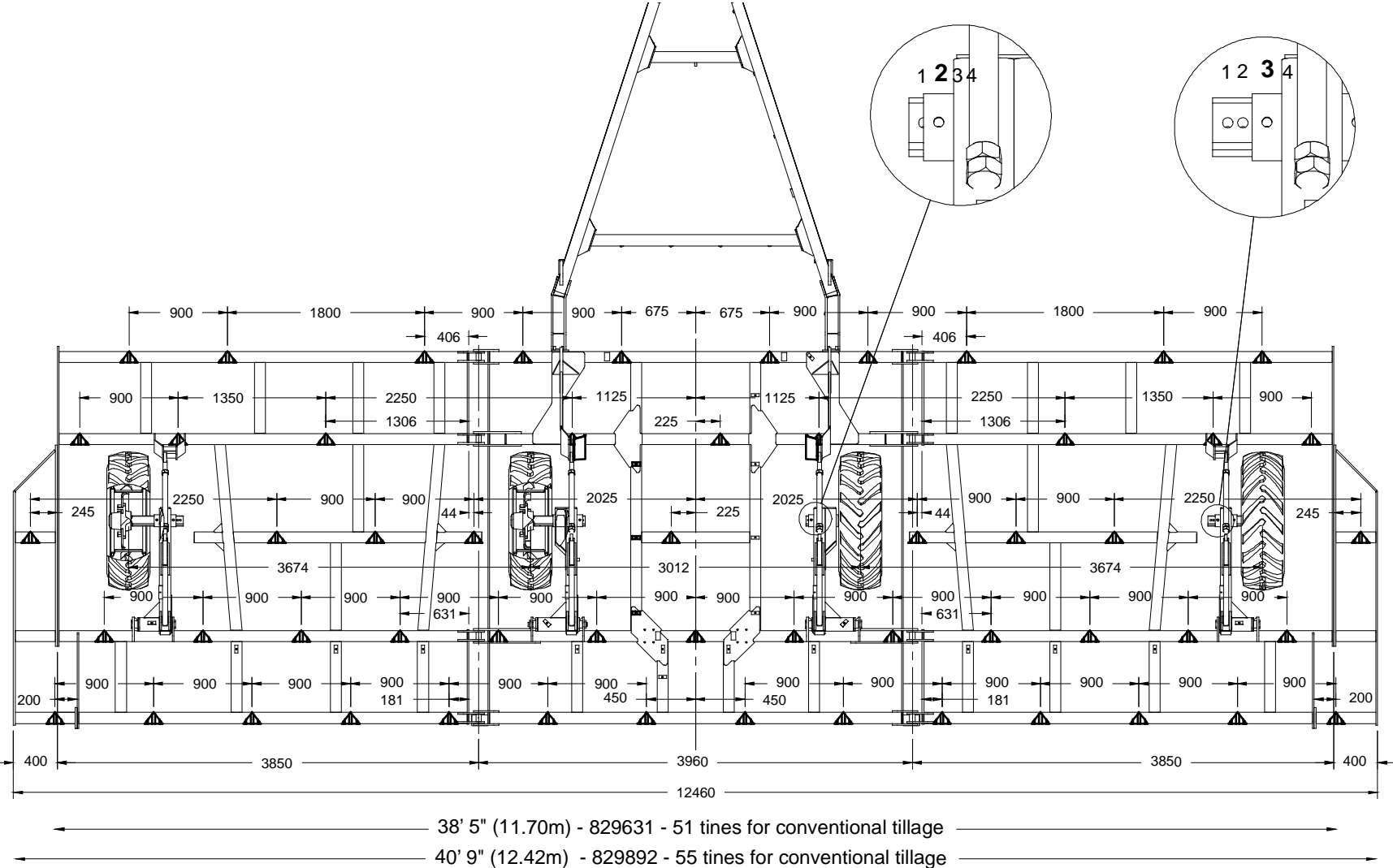
38' Scaribar with 65 Tines
41' Scaribar with 69 Tines

Medium Centre @ 7" (180 mm) Spacing



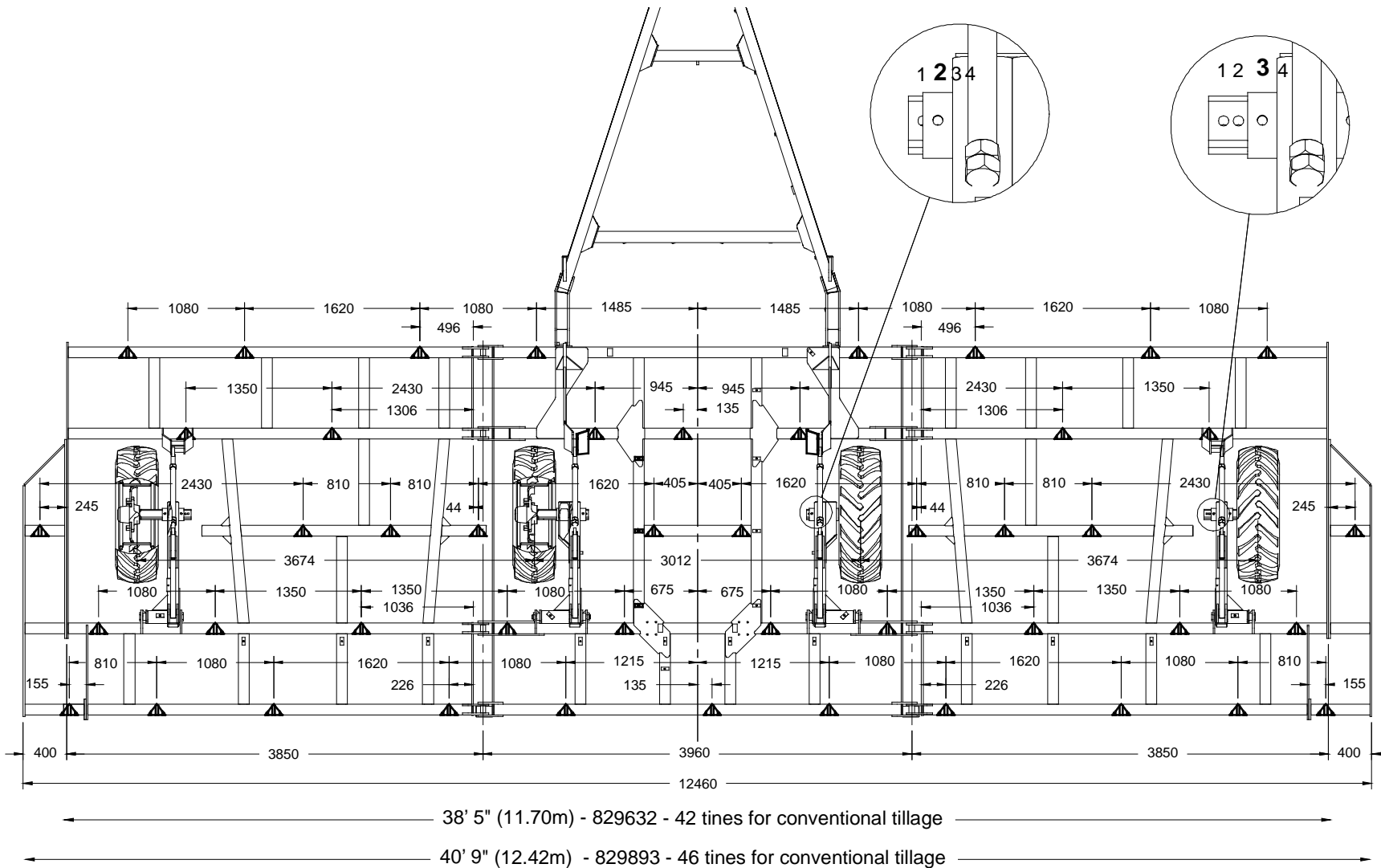
38' Scaribar with 51 Tines
41' Scaribar with 55 Tines

Medium Centre @ 8³/₄" (225 mm) Spacing



38' Scaribar with 42 Tines
41' Scaribar with 46 Tines

Medium Centre @ 10½" (270 mm) Spacing



AS0111037900	13	FA4296024	7	FA5398214	25	HF5394031	27	HF5398214	23	HW090278	11
FA000013	17	FA4296024	9	FA5398214	27	HF5394043	19	HF5398215	23	HW090292	7
FA000014	17	FA4296024	11	HA400205	25	HF5394053	25	HF5398215	21	HW090292	9
FA000026	19	FA4296024	21	HA400205	27	HF5394062	19	HF5398215	25	HW090292	11
FA000030	17	FA4296024	23	HF020000	21	HF5394069	19	HF5398215	27	HW090292	13
FA4191202	23	FA4296025	7	HF020000	23	HF5394072	19	HF5398216	21	HW090359	7
FA4192032	19	FA4296025	9	HF020000	25	HF5394096	19	HF5398216	23	HW090359	9
FA4192047	7	FA4296025	11	HF020000	27	HF5394097	19	HF5398216	25	HW090359	11
FA4192047	9	FA4296025	13	HF020001	23	HF5394098	19	HF5398216	27	HW090359	13
FA4192047	11	FA4296025	13	HF020002	23	HF5394189	19	HF5398222	21	OT020006	23
FA4192074	21	FA4296025	15	HF020004	19	HF5394201	21	HF5398222	23	SB380879	13
FA4192077	23	FA4296025	19	HF020004	21	HF5394201	25	HH808501	11	SB740037	7
FA4192078	7	FA4296026	17	HF020004	23	HF5394201	27	HW0147930002	23	SB740037	9
FA4192078	9	FA4296028	13	HF020004	25	HF5394228	19	HW090011	13	SB740037	11
FA4192078	11	FA4296032	17	HF020004	27	HF5394228	23	HW090019	11	SB808501	7
FA4192084	13	FA4391005	21	HF020022	19	HF5394229	19	HW090019	7	SB808501	9
FA4192085	13	FA4391005	23	HF020123	21	HF5394243	19	HW090019	9	SB820020	17
FA4192090	7	FA4391006	13	HF020124	25	HF5394244	19	HW090021	7	SB820026	17
FA4192090	9	FA4391006	23	HF020124	27	HF5394245	19	HW090021	9	SB820027	17
FA4192090	11	FA4391010	7	HF020128	23	HF5394508	19	HW090021	11	SB820027ADI	19
FA4192105	13	FA4391010	9	HF020129	23	HF5394509	19	HW090124	15	SB820029	17
FA4192105	13	FA4391010	11	HF020130	23	HF5394619	21	HW090125	15	SB820030	17
FA4192107	19	FA4391010	25	HF020131	23	HF5394627	27	HW090126	15	SB820036	17
FA4192108	7	FA4391010	27	HF020190	19	HF5394632	19	HW090127	15	SB820039	17
FA4192108	9	FA4391202	21	HF020191	19	HF5394633	19	HW090128	15	SB820342	25
FA4192108	11	FA4392004	19	HF020192	19	HF5394635	19	HW090129	15	SB820342	27
FA4192117	15	FA4392055	19	HF020193	19	HF5394636	19	HW090130	15	SB820364	23
FA4192118	13	FA4399052	13	HF020194	19	HF5394801	23	HW090131	15	SB820368	25
FA4192127	17	FA4491014	17	HF020195	19	HF5394802	19	HW090132	15	SB820368	27
FA4192155	13	FA4491082	19	HF020196	19	HF5398162	21	HW090133	15	SB820438	21
FA4195005	19	FA4494050	13	HF020198	19	HF5398162	23	HW090134	15	SB820440	23
FA4291010	7	FA4691195	7	HF020199	19	HF5398210	21	HW090135	15	SB820442	23
FA4291010	9	FA4691195	9	HF020201	19	HF5398210	23	HW090136	15	SB820443	13
FA4291010	11	FA4691195	11	HF4994026	7	HF5398210	25	HW090137	15	SB820444	13
FA4296006	17	FA4692000	25	HF4994026	9	HF5398210	27	HW090138	15	SB820445	13
FA4296022	19	FA4692000	27	HF4994026	11	HF5398211	21	HW090277	7	SB820445	23
FA4296023	7	FA4692001	7	HF5394001	21	HF5398211	23	HW090277	9	SB820446	13
FA4296023	9	FA4692001	9	HF5394026	23	HF5398211	25	HW090277	11	SB820446	23
FA4296023	11	FA4692001	11	HF5394029	23	HF5398211	27	HW090278	7	SB820447	13
FA4296023	17	FA4692001	17	HF5394031	25	HF5398214	21	HW090278	9	SB820448	13

SB820449	13	SB820722	7	SB821240	9	SB821453	17	WH58930020	15
SB820449	23	SB820722	9	SB821240	11	SB821454	17		
SB820454	23	SB820722	11	SB821270	21	SB821455	17		
SB820489	17	SB820722	15	SB821271	25	SB821539	9		
SB820582	7	SB820723	7	SB821271	27	SB821539	11		
SB820582	9	SB820723	9	SB821275	23	SB821540	9		
SB820582	11	SB820723	11	SB821276	23	SB821541	9		
SB820583	7	SB820723	15	SB821277	23	SB821541	11		
SB820583	9	SB820748	7	SB821278	23	SB821550	7		
SB820583	11	SB820748	9	SB821309	17	SB821550	9		
SB820585	7	SB820748	11	SB821310	17	SB821551	11		
SB820585	9	SB820749	7	SB821311	17	SB821610	13		
SB820585	11	SB820749	9	SB821312	17	SB821619	7		
SB820586	7	SB820749	11	SB821313	17	SB821620	9		
SB820586	9	SB820800PN	23	SB821314	17	SB821620	11		
SB820586	11	SB820830	23	SB821315	17	SB821625	7		
SB820588	7	SB820906	17	SB821316	17	SB821632	9		
SB820588	9	SB820918	17	SB821320	19	SB821632	11		
SB820588	11	SB820919	17	SB821321	19	SB821639	13		
SB820589	7	SB820920	17	SB821328	19	SB821640	13		
SB820589	9	SB820921	17	SB821329	19	SB821702	7		
SB820589	11	SB820922	17	SB821331	17	SB822094	13		
SB820614	17	SB820923	17	SB821333	17	SB822162	7		
SB820615	21	SB820927	17	SB821334	17	SB822162	9		
SB820615	25	SB820928	17	SB821337	17	SB822162	11		
SB820615		SB820929	17	SB821338	17	SB822618	19		
SB820616	21	SB820936	13	SB821339	17	SB822618	19		
SB820655	17	SB820946	17	SB821375	13	SB822660	19		
SB820699	23	SB821069	25	SB821400	23	SB822661	19		
SB820713	15	SB821069	27	SB821401	21	SB822664	19		
SB820714	15	SB821073	23	SB821402	21	SB822665A	19		
SB820715	15	SB821194	7	SB821403	21	SB822669	19		
SB820715	15	SB821194	9	SB821404	21	SB822670	19		
SB820720	7	SB821194	11	SB821405	23	SB823310	7		
SB820720	9	SB821194	7	SB821410	23	SB823311	7		
SB820720	11	SB821194	9	SB821411	23	SB823312	9		
SB820720	15	SB821194	11	SB821412	25	SB823313	9		
SB820721	7	SB821195	7	SB821412	27	SB823316	11		
SB820721	9	SB821195	11	SB821414	23	SB823317	11		
SB820721	11	SB821195	9	SB821415	23	SM680331	23		
SB820721	15	SB821240	7	SB821416	27	WH040009	15		